



[Go to Product page](#)

Datasheet for ABIN6746706  
**anti-Rhodopsin antibody (C-Term)**

1 Image

Overview

Quantity:	100 µL
Target:	Rhodopsin (RHO)
Binding Specificity:	C-Term
Reactivity:	Human, Monkey, Dog
Host:	Rabbit
Clonality:	Polyclonal
Conjugate:	This Rhodopsin antibody is un-conjugated
Application:	Western Blotting (WB)

Product Details

Immunogen:	Synthetic peptide from C-Terminus of human RHO (P08100, NP_000530). Percent identity by BLAST analysis: Human, Chimpanzee, Gorilla, Gibbon, Monkey, Marmoset (100%), Rat, Sheep, Hamster, Bovine, Rabbit, Opossum, Guinea pig, Platypus (92%), Galago, Mouse, Dolphin, Panda, Dog, Cat, Bat, Pig (85%).  Type of Immunogen: Synthetic peptide
Specificity:	Human RHO / Rhodopsin
Predicted Reactivity:	Percent identity by BLAST analysis: Rat, Guinea pig (92%) Dog (85%).
Purification:	Immunoaffinity purified

## Target Details

---

Target:	Rhodopsin (RHO)
Alternative Name:	Rhodopsin / RHO ( <a href="#">RHO Products</a> )
Target Type:	Chemical
Background:	Name/Gene ID: RHO Subfamily: Opsin Family: GPCR  Synonyms: RHO, CSNBAD1, OPN2, Rhodopsin, RP4, Opsin 2, rod pigment, Opsin-2
Gene ID:	6010
NCBI Accession:	<a href="#">NP_000530</a>
UniProt:	<a href="#">P08100</a>
Pathways:	<a href="#">WNT Signaling</a> , <a href="#">Sensory Perception of Sound</a> , <a href="#">Regulation of G-Protein Coupled Receptor Protein Signaling</a> , <a href="#">Phototransduction</a>

## Application Details

---

Application Notes:	Approved: WB (0.2 - 1 µg/mL)  Usage: Western Blot: Suggested dilution at 1 µg/mL in 5 % skim milk / PBS buffer, and HRP conjugated anti-Rabbit IgG should be diluted in 1: 50,000 - 100,000 as secondary antibody.
Comment:	Target Species of Antibody: Human
Restrictions:	For Research Use only

## Handling

---

Format:	Lyophilized
Reconstitution:	Distilled water
Concentration:	Lot specific
Buffer:	Lyophilized from PBS with 2 % sucrose
Handling Advice:	Avoid repeat freeze-thaw cycles.
Storage:	4 °C, -20 °C
Storage Comment:	Long term: -20°C, the use of 50% glycerol is recommended if storing aliquots in -20°C for long

## Handling

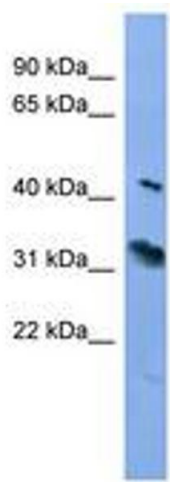
---

term use (up to 1 year)

Short term (less than 1 week): 4°C. Avoid freeze-thaw cycles.

## Images

---



**Image 1.**