



[Go to Product page](#)

Datasheet for ABIN6746708
anti-Mrgprf antibody (AA 216-265)

1 Image

Overview

Quantity:	100 µL
Target:	Mrgprf
Binding Specificity:	AA 216-265
Reactivity:	Human, Mouse, Rat, Horse, Cow, Dog, Guinea Pig, Monkey, Pig
Host:	Rabbit
Clonality:	Polyclonal
Conjugate:	This Mrgprf antibody is un-conjugated
Application:	Western Blotting (WB)

Product Details

Immunogen:	Synthetic peptide located between aa216-265 of human MRGPRF (Q96AM1, NP_659452). Percent identity by BLAST analysis: Human, Chimpanzee, Gorilla, Galago, Marmoset, Mouse, Rat, Elephant, Panda, Dog, Bovine, Horse, Pig, Guinea pig (100%). Type of Immunogen: Synthetic peptide
Specificity:	Human MRGPRF
Predicted Reactivity:	Percent identity by BLAST analysis: Human, Mouse, Rat, Dog, Bovine, Horse, Pig (100%).
Purification:	Immunoaffinity purified

Target Details

Target:	Mrgprf
---------	--------

Target Details

Alternative Name: MRGPRF ([Mrgprf Products](#))

Background: Name/Gene ID: MRGPRF
Subfamily: Orphan-U
Family: GPCR

Synonyms: MRGPRF, G protein-coupled receptor 168, G-protein coupled receptor 140, G-protein coupled receptor 168, GPR140, GPR168, MRGF, Mas-related gene F protein, G protein-coupled receptor 140, MAS-related GPR, member F, RTA

Gene ID: 116535

NCBI Accession: [NP_659452](#)

UniProt: [Q96AM1](#)

Application Details

Application Notes: Approved: WB (1 µg/mL)

Usage: Western Blot: Suggested dilution at 1 µg/mL in 5 % skim milk / PBS buffer, and HRP conjugated anti-Rabbit IgG should be diluted in 1: 50,000 - 100,000 as secondary antibody.

Comment: Target Species of Antibody: Human

Restrictions: For Research Use only

Handling

Format: Lyophilized

Reconstitution: Distilled water

Concentration: Lot specific

Buffer: Lyophilized from PBS with 2 % sucrose

Handling Advice: Avoid repeat freeze-thaw cycles.

Storage: 4 °C, -20 °C

Storage Comment: Long term: -20°C, the use of 50% glycerol is recommended if storing aliquots in -20°C for long term use (up to 1 year)

Short term (less than 1 week): 4°C. Avoid freeze-thaw cycles.

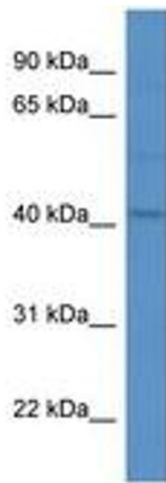


Image 1.