



[Go to Product page](#)

Datasheet for ABIN6746711  
**anti-BASP1 antibody (AA 134-183)**

1 Image

Overview

Quantity:	100 µL
Target:	BASP1
Binding Specificity:	AA 134-183
Reactivity:	Human, Monkey
Host:	Rabbit
Clonality:	Polyclonal
Conjugate:	This BASP1 antibody is un-conjugated
Application:	Western Blotting (WB)

Product Details

Immunogen:	Synthetic peptide located between aa134-183 of human BASP1 (P80723, NP_006308). Percent identity by BLAST analysis: Human, Chimpanzee, Gibbon, Monkey, Marmoset (100%), Opossum, Chicken (90%), Xenopus (85%).  Type of Immunogen: Synthetic peptide
Specificity:	Human BASP1
Predicted Reactivity:	Percent identity by BLAST analysis: Human (100%) Chicken (90%).
Purification:	Immunoaffinity purified

Target Details

Target:	BASP1
---------	-------

## Target Details

---

Alternative Name: [BASP1 \(BASP1 Products\)](#)

Background: Name/Gene ID: BASP1

Synonyms: BASP1, CAP23, Brain acid soluble protein 1, Brain acid-soluble protein 1, CAP-23, NAP-22, NAP22

Gene ID: 10409

NCBI Accession: [NP\\_006308](#)

UniProt: [P80723](#)

## Application Details

---

Application Notes: Approved: WB (0.2 - 1 µg/mL)

Usage: Western Blot: Suggested dilution at 1 µg/mL in 5 % skim milk / PBS buffer, and HRP conjugated anti-Rabbit IgG should be diluted in 1: 50,000 - 100,000 as secondary antibody.

Comment: Target Species of Antibody: Human

Restrictions: For Research Use only

## Handling

---

Format: Lyophilized

Reconstitution: Distilled water

Concentration: Lot specific

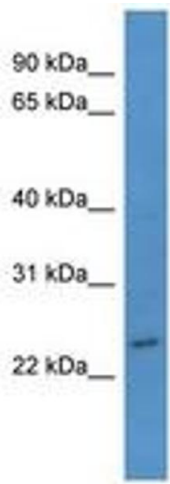
Buffer: Lyophilized from PBS with 2 % sucrose

Handling Advice: Avoid repeat freeze-thaw cycles.

Storage: 4 °C, -20 °C

Storage Comment: Long term: -20°C, the use of 50% glycerol is recommended if storing aliquots in -20°C for long term use (up to 1 year)

Short term (less than 1 week): 4°C. Avoid freeze-thaw cycles.



**Image 1.**