



[Go to Product page](#)

Datasheet for ABIN6746717
anti-ADD3 antibody (C-Term)

1 Image

Overview

Quantity:	100 µL
Target:	ADD3
Binding Specificity:	C-Term
Reactivity:	Human, Mouse, Rat, Cow, Guinea Pig, Dog, Horse, Rabbit, Zebrafish (Danio rerio), Bat, Chicken, Hamster, Monkey, Pig, Xenopus laevis
Host:	Rabbit
Clonality:	Polyclonal
Conjugate:	This ADD3 antibody is un-conjugated
Application:	Western Blotting (WB)

Product Details

Immunogen:	Synthetic peptide from C-Terminus of human ADD3 (Q9UEY8, NP_001112). Percent identity by BLAST analysis: Human, Gorilla, Orangutan, Gibbon, Monkey, Galago, Marmoset, Mouse, Rat, Hamster, Elephant, Panda, Dog, Bovine, Bat, Rabbit, Horse, Pig, Opossum, Guinea pig, Turkey, Zebra finch, Chicken, Platypus, Lizard, Xenopus, Salmon, Zebrafish (100%), Stickleback (91%). Type of Immunogen: Synthetic peptide
Specificity:	Human ADD3
Predicted Reactivity:	Percent identity by BLAST analysis: Human, Dog, Bovine, Horse, Pig, Chicken, Xenopus (100%) Mouse, Rat, Guinea pig (92%) Zebrafish (84%).
Purification:	Immunoaffinity purified

Target Details

Target:	ADD3
Alternative Name:	ADD3 (ADD3 Products)
Background:	Name/Gene ID: ADD3 Synonyms: ADD3, ADDL, Adducin-like protein 70, Adducin 3 (gamma), Adducin gamma subunit, Gamma-adducin
Gene ID:	120
NCBI Accession:	NP_001112
UniProt:	Q9UEY8

Application Details

Application Notes:	Approved: WB (0.2 - 1 µg/mL) Usage: Western Blot: Suggested dilution at 1 µg/mL in 5 % skim milk / PBS buffer, and HRP conjugated anti-Rabbit IgG should be diluted in 1: 50,000 - 100,000 as secondary antibody. Not recommended for: IF
Comment:	Target Species of Antibody: Human
Restrictions:	For Research Use only

Handling

Format:	Lyophilized
Reconstitution:	Distilled water
Concentration:	Lot specific
Buffer:	Lyophilized from PBS with 2 % sucrose
Handling Advice:	Avoid repeat freeze-thaw cycles.
Storage:	4 °C, -20 °C
Storage Comment:	Long term: -20°C, the use of 50% glycerol is recommended if storing aliquots in -20°C for long term use (up to 1 year) Short term (less than 1 week): 4°C. Avoid freeze-thaw cycles.

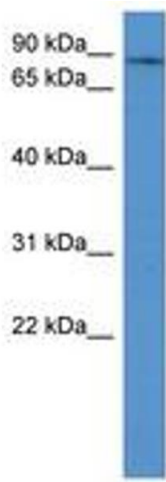


Image 1.