



[Go to Product page](#)

Datasheet for ABIN6746719

anti-ADORA1 antibody (AA 189-238)

1 Image

Overview

Quantity:	100 µL
Target:	ADORA1
Binding Specificity:	AA 189-238
Reactivity:	Human, Rat, Mouse, Dog, Cow, Pig, Horse, Monkey, Guinea Pig, Hamster
Host:	Rabbit
Clonality:	Polyclonal
Conjugate:	This ADORA1 antibody is un-conjugated
Application:	Western Blotting (WB)

Product Details

Immunogen:	Synthetic peptide located between aa189-238 of human ADORA1 (P30542, NP_000665). Percent identity by BLAST analysis: Human, Chimpanzee, Gorilla, Orangutan, Gibbon, Monkey, Galago, Marmoset, Mouse, Rat, Hamster, Elephant, Panda, Dog, Bovine, Horse, Pig, Guinea pig (100%), Opossum (92%), Rabbit, Turkey, Zebra finch, Chicken (85%). Type of Immunogen: Synthetic peptide
Specificity:	Human ADORA1 / Adenosine A1 Receptor
Predicted Reactivity:	Percent identity by BLAST analysis: Mouse, Rat, Pig (100%).
Purification:	Immunoaffinity purified

Target Details

Target:	ADORA1
Alternative Name:	ADORA1 / Adenosine A1 Receptor (ADORA1 Products)
Background:	Name/Gene ID: ADORA1 Subfamily: Adenosine Family: GPCR Synonyms: ADORA1, A1 adenosine receptor, A1ar, Adenosine A1 receptor, Adenosine receptor A1, ADO-A1 receptor, RDC7
Gene ID:	134
NCBI Accession:	NP_000665
UniProt:	P30542
Pathways:	EGFR Signaling Pathway , Negative Regulation of Hormone Secretion , Synaptic Membrane

Application Details

Application Notes:	Approved: WB (0.2 - 1 µg/mL) Usage: Western Blot: Suggested dilution at 1 µg/mL in 5 % skim milk / PBS buffer, and HRP conjugated anti-Rabbit IgG should be diluted in 1: 50,000 - 100,000 as secondary antibody.
Comment:	Target Species of Antibody: Human
Restrictions:	For Research Use only

Handling

Format:	Lyophilized
Reconstitution:	Distilled water
Concentration:	Lot specific
Buffer:	Lyophilized from PBS with 2 % sucrose
Handling Advice:	Avoid repeat freeze-thaw cycles.
Storage:	4 °C,-20 °C
Storage Comment:	Long term: -20°C, the use of 50% glycerol is recommended if storing aliquots in -20°C for long term use (up to 1 year)

Handling

Short term (less than 1 week): 4°C. Avoid freeze-thaw cycles.

Images

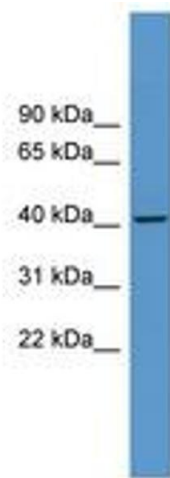


Image 1.