

Datasheet for ABIN6746751
anti-CA2 antibody (AA 130-179)



[Go to Product page](#)

1 Image

Overview

Quantity:	100 µL
Target:	CA2
Binding Specificity:	AA 130-179
Reactivity:	Human, Monkey, Dog, Sheep, Horse, Pig
Host:	Rabbit
Clonality:	Polyclonal
Conjugate:	This CA2 antibody is un-conjugated
Application:	Western Blotting (WB)

Product Details

Immunogen:	Synthetic peptide located between aa130-179 of human CA2 (P00918, NP_000058). Percent identity by BLAST analysis: Human, Chimpanzee, Gorilla, Gibbon, Monkey, Galago, Marmoset, Sheep, Dog, Horse (100%), Elephant, Bovine, Guinea pig (92%), Rabbit, Pig (85%). Type of Immunogen: Synthetic peptide
Specificity:	Human CA2 / Carbonic Anhydrase II
Predicted Reactivity:	Percent identity by BLAST analysis: Dog, Horse (100%) Guinea pig (92%) Pig (85%).
Purification:	Immunoaffinity purified

Target Details

Target:	CA2
---------	-----

Target Details

Alternative Name:	CA2 / Carbonic Anhydrase II (CA2 Products)
Background:	Name/Gene ID: CA2 Synonyms: CA2, CA-II, CAII, CAC, Car2, Carbonate dehydratase II, Carbonic anhydrase C, Carbonic anhydrase II, Carbonic dehydratase, Carbonic anhydrase 2, Carbonic anhydrase B
Gene ID:	760
NCBI Accession:	NP_000058
UniProt:	P00918

Application Details

Application Notes:	Approved: WB (0.2 - 1 µg/mL) Usage: Western Blot: Suggested dilution at 1 µg/mL in 5 % skim milk / PBS buffer, and HRP conjugated anti-Rabbit IgG should be diluted in 1: 50,000 - 100,000 as secondary antibody.
Comment:	Target Species of Antibody: Human
Restrictions:	For Research Use only

Handling

Format:	Lyophilized
Reconstitution:	Distilled water
Concentration:	Lot specific
Buffer:	Lyophilized from PBS with 2 % sucrose
Handling Advice:	Avoid repeat freeze-thaw cycles.
Storage:	4 °C, -20 °C
Storage Comment:	Long term: -20°C, the use of 50% glycerol is recommended if storing aliquots in -20°C for long term use (up to 1 year) Short term (less than 1 week): 4°C. Avoid freeze-thaw cycles.

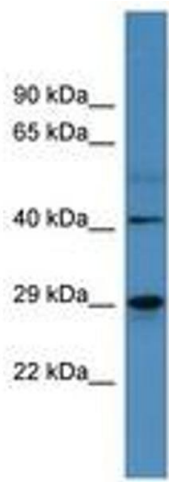


Image 1.