



[Go to Product page](#)

Datasheet for ABIN6746757
anti-CTSC antibody (AA 185-234)

1 Image

Overview

Quantity:	100 µL
Target:	CTSC
Binding Specificity:	AA 185-234
Reactivity:	Human, Mouse, Cow, Monkey
Host:	Rabbit
Clonality:	Polyclonal
Conjugate:	This CTSC antibody is un-conjugated
Application:	Western Blotting (WB)

Product Details

Immunogen:	Synthetic peptide located between aa185-234 of human CTSC (P53634, NP_001805). Percent identity by BLAST analysis: Human, Gorilla, Orangutan, Gibbon, Monkey (100%), Marmoset, Bovine, Horse (85%), Mouse (78%). Type of Immunogen: Synthetic peptide
Specificity:	Human CTSC / Cathepsin C
Predicted Reactivity:	Percent identity by BLAST analysis: Human (100%) Bovine (85%).
Purification:	Immunoaffinity purified

Target Details

Target:	CTSC
---------	------

Target Details

Alternative Name: CTSC / Cathepsin C / JP ([CTSC Products](#))

Background: Name/Gene ID: CTSC
Subfamily: Cysteine C1
Family: Protease

Synonyms: CTSC, Cathepsin J, Dipeptidyl peptidase 1, Dipeptidyl peptidase I, DPP-I, Dipeptidyl transferase, Dipeptidyl-peptidase I, CPPI, DPPI, DPP1, HMS, JP, PDON1, PLS, JPD, Cathepsin C, PALS

Gene ID: 1075

NCBI Accession: [NP_001805](#)

UniProt: [P53634](#)

Application Details

Application Notes: Approved: WB (0.2 - 1 µg/mL)

Usage: Western Blot: Suggested dilution at 1 µg/mL in 5 % skim milk / PBS buffer, and HRP conjugated anti-Rabbit IgG should be diluted in 1: 50,000 - 100,000 as secondary antibody.

Comment: Target Species of Antibody: Human

Restrictions: For Research Use only

Handling

Format: Lyophilized

Reconstitution: Distilled water

Concentration: Lot specific

Buffer: Lyophilized from PBS with 2 % sucrose

Handling Advice: Avoid repeat freeze-thaw cycles.

Storage: 4 °C, -20 °C

Storage Comment: Long term: -20°C, the use of 50% glycerol is recommended if storing aliquots in -20°C for long term use (up to 1 year)

Short term (less than 1 week): 4°C. Avoid freeze-thaw cycles.

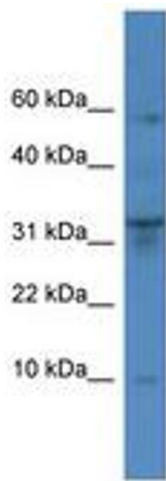


Image 1.