

Datasheet for ABIN6746763
anti-CYP2J2 antibody (AA 335-384)[Go to Product page](#)

1 Image

Overview

Quantity:	100 µL
Target:	CYP2J2
Binding Specificity:	AA 335-384
Reactivity:	Human, Monkey
Host:	Rabbit
Clonality:	Polyclonal
Conjugate:	This CYP2J2 antibody is un-conjugated
Application:	Western Blotting (WB)

Product Details

Immunogen:	Synthetic peptide located between aa335-384 of human CYP2J2 (P51589, NP_000766). Percent identity by BLAST analysis: Human, Chimpanzee, Gorilla, Gibbon, Monkey, Marmoset (100%), Horse (91%). Type of Immunogen: Synthetic peptide
Specificity:	Human CYP2J2
Predicted Reactivity:	Percent identity by BLAST analysis: Human (100%).
Purification:	Immunoaffinity purified

Target Details

Target:	CYP2J2
---------	--------

Target Details

Alternative Name:	CYP2J2 (CYP2J2 Products)
Background:	Name/Gene ID: CYP2J2 Family: Cytochrome P450 Synonyms: CYP2J2, Arachidonic acid epoxygenase, CYP11J2, Cytochrome p450 11j2, CPJ2, Cytochrome P450 2J2
Gene ID:	1573
NCBI Accession:	NP_000766
UniProt:	P51589

Application Details

Application Notes:	Approved: WB (0.2 - 1 µg/mL) Usage: Western Blot: Suggested dilution at 1 µg/mL in 5 % skim milk / PBS buffer, and HRP conjugated anti-Rabbit IgG should be diluted in 1: 50,000 - 100,000 as secondary antibody.
Comment:	Target Species of Antibody: Human
Restrictions:	For Research Use only

Handling

Format:	Lyophilized
Reconstitution:	Distilled water
Concentration:	Lot specific
Buffer:	Lyophilized from PBS with 2 % sucrose
Handling Advice:	Avoid repeat freeze-thaw cycles.
Storage:	4 °C, -20 °C
Storage Comment:	Long term: -20°C, the use of 50% glycerol is recommended if storing aliquots in -20°C for long term use (up to 1 year) Short term (less than 1 week): 4°C. Avoid freeze-thaw cycles.

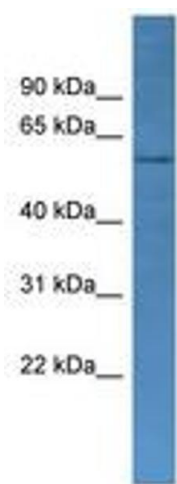


Image 1.