

Datasheet for ABIN6746773

anti-DEFB4A antibody (AA 6-55)



[Go to Product page](#)

1 Image

Overview

Quantity:	100 µL
Target:	DEFB4A (DEFB4)
Binding Specificity:	AA 6-55
Reactivity:	Human, Monkey
Host:	Rabbit
Clonality:	Polyclonal
Conjugate:	This DEFB4A antibody is un-conjugated
Application:	Western Blotting (WB)

Product Details

Immunogen:	Synthetic peptide located between aa6-55 of human DEFB4A (O15263, NP_004933). Percent identity by BLAST analysis: Human, Chimpanzee, Gorilla, Gibbon, Monkey (100%), Orangutan (85%). Type of Immunogen: Synthetic peptide
Specificity:	Human DEFB4A / DEFB4
Predicted Reactivity:	Percent identity by BLAST analysis:
Purification:	Immunoaffinity purified

Target Details

Target:	DEFB4A (DEFB4)
---------	----------------

Target Details

Alternative Name:	DEFB4A / DEFB2 (DEFB4 Products)
Background:	Name/Gene ID: DEFB4A Synonyms: DEFB4A, Beta-defensin 2, Beta-defensin 4A, DEFB-2, DEFB102, Defensin, beta 2, Defensin, beta 4, Defensin, beta 4A, DEFB4, DEFB2, HBD-2, Skin-antimicrobial peptide 1, BD-2, SAP1
Gene ID:	1673
NCBI Accession:	NP_004933

Application Details

Application Notes:	Approved: WB (0.2 - 1 µg/mL) Usage: Western Blot: Suggested dilution at 1 µg/mL in 5 % skim milk / PBS buffer, and HRP conjugated anti-Rabbit IgG should be diluted in 1: 50,000 - 100,000 as secondary antibody.
Comment:	Target Species of Antibody: Human
Restrictions:	For Research Use only

Handling

Format:	Lyophilized
Reconstitution:	Distilled water
Concentration:	Lot specific
Buffer:	Lyophilized from PBS with 2 % sucrose
Handling Advice:	Avoid repeat freeze-thaw cycles.
Storage:	4 °C,-20 °C
Storage Comment:	Long term: -20°C, the use of 50% glycerol is recommended if storing aliquots in -20°C for long term use (up to 1 year) Short term (less than 1 week): 4°C. Avoid freeze-thaw cycles.

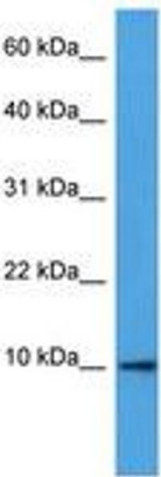


Image 1.