

Datasheet for ABIN6746783  
**anti-ARPM1 antibody (AA 21-70)**[Go to Product page](#)

## 1 Image

## Overview

Quantity:	100 µL
Target:	ARPM1
Binding Specificity:	AA 21-70
Reactivity:	Human
Host:	Rabbit
Clonality:	Polyclonal
Conjugate:	This ARPM1 antibody is un-conjugated
Application:	Western Blotting (WB)

## Product Details

Immunogen:	Synthetic peptide located between aa21-70 of human ACTRT3 (Q9BYD9, NP_115876). Percent identity by BLAST analysis: Human (100%), Monkey, Marmoset (92%).  Type of Immunogen: Synthetic peptide
Specificity:	Human ARPM1
Predicted Reactivity:	Percent identity by BLAST analysis: Human (100%).
Purification:	Immunoaffinity purified

## Target Details

Target:	ARPM1
Alternative Name:	ARPM1 ( <a href="#">ARPM1 Products</a> )

## Target Details

Background:	Name/Gene ID: ACTRT3  Synonyms: ACTRT3, Actin-related protein T3, ARP-T3, ARPM1, Actin related protein M1, Actin-related protein M1
Gene ID:	84517
NCBI Accession:	<a href="#">NP_115876</a>
UniProt:	<a href="#">Q9BYD9</a>

## Application Details

Application Notes:	Approved: WB (0.2 - 1 µg/mL)  Usage: Western Blot: Suggested dilution at 1 µg/mL in 5 % skim milk / PBS buffer, and HRP conjugated anti-Rabbit IgG should be diluted in 1: 50,000 - 100,000 as secondary antibody.
Comment:	Target Species of Antibody: Human
Restrictions:	For Research Use only

## Handling

Format:	Lyophilized
Reconstitution:	Distilled water
Concentration:	Lot specific
Buffer:	Lyophilized from PBS with 2 % sucrose
Handling Advice:	Avoid repeat freeze-thaw cycles.
Storage:	4 °C, -20 °C
Storage Comment:	Long term: -20°C, the use of 50% glycerol is recommended if storing aliquots in -20°C for long term use (up to 1 year)  Short term (less than 1 week): 4°C. Avoid freeze-thaw cycles.

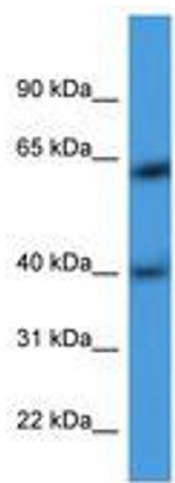


Image 1.