



[Go to Product page](#)

Datasheet for ABIN6746791
anti-KBTBD8 antibody (AA 63-112)

1 Image

Overview

Quantity:	100 µL
Target:	KBTBD8
Binding Specificity:	AA 63-112
Reactivity:	Human, Cow, Dog, Guinea Pig, Horse, Mouse, Rat, Zebrafish (Danio rerio), Chicken, Monkey, Pig, Xenopus laevis
Host:	Rabbit
Clonality:	Polyclonal
Conjugate:	This KBTBD8 antibody is un-conjugated
Application:	Western Blotting (WB)

Product Details

Immunogen:	Synthetic peptide located between aa63-112 of human KBTBD8 (Q8NFY9, NP_115894). Percent identity by BLAST analysis: Human, Chimpanzee, Gorilla, Gibbon, Monkey, Galago, Marmoset, Mouse, Rat, Elephant, Panda, Dog, Bovine, Horse, Pig, Opossum, Guinea pig, Zebra finch, Chicken, Lizard, Xenopus (100%), Bat, Rabbit, Platypus (92%), Seabass, Stickleback, Zebrafish (85%). Type of Immunogen: Synthetic peptide
Specificity:	Human KBTBD8
Predicted Reactivity:	Percent identity by BLAST analysis: Human, Rat, Dog, Bovine, Horse, Guinea pig, Chicken (100%) Rabbit (92%) Zebrafish (85%).

Product Details

Purification: Immunoaffinity purified

Target Details

Target: KBTBD8

Alternative Name: KBTBD8 ([KBTBD8 Products](#))

Background: Name/Gene ID: KBTBD8

Synonyms: KBTBD8, KIAA1842, TA-KRP, TAKRP

Gene ID: 84541

NCBI Accession: [NP_115894](#)

UniProt: [Q8NFY9](#)

Application Details

Application Notes: Approved: WB (0.2 - 1 µg/mL)

Usage: Western Blot: Suggested dilution at 1 µg/mL in 5 % skim milk / PBS buffer, and HRP conjugated anti-Rabbit IgG should be diluted in 1: 50,000 - 100,000 as secondary antibody.

Comment: Target Species of Antibody: Human

Restrictions: For Research Use only

Handling

Format: Lyophilized

Reconstitution: Distilled water

Concentration: Lot specific

Buffer: Lyophilized from PBS with 2 % sucrose

Handling Advice: Avoid repeat freeze-thaw cycles.

Storage: 4 °C, -20 °C

Storage Comment: Long term: -20°C, the use of 50% glycerol is recommended if storing aliquots in -20°C for long term use (up to 1 year)

Short term (less than 1 week): 4°C. Avoid freeze-thaw cycles.

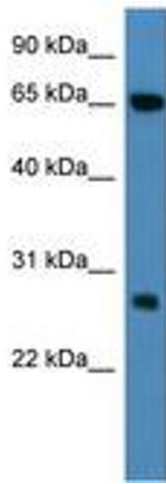


Image 1.