

Datasheet for ABIN6746803
anti-MAPKAP Kinase 3 antibody (C-Term)



[Go to Product page](#)

1 Image

Overview

| | |
|----------------------|--|
| Quantity: | 100 µL |
| Target: | MAPKAP Kinase 3 (MAPKAPK3) |
| Binding Specificity: | C-Term |
| Reactivity: | Human, Pig, Rabbit, Guinea Pig, Horse, Monkey, Chicken |
| Host: | Rabbit |
| Clonality: | Polyclonal |
| Conjugate: | This MAPKAP Kinase 3 antibody is un-conjugated |
| Application: | Western Blotting (WB) |

Product Details

| | |
|-----------------------|--|
| Immunogen: | Synthetic peptide from C-Terminus of human MAPKAPK3 (Q16644, NP_004626). Percent identity by BLAST analysis: Human, Chimpanzee, Gorilla, Gibbon, Monkey, Marmoset, Elephant, Rabbit, Horse, Pig, Opossum, Guinea pig, Turkey, Zebra finch, Chicken, Lizard (100%), Mouse, Panda, Dog, Bovine, Bat, Platypus, Xenopus (92%), Galago, Rat (85%). Type of Immunogen: Synthetic peptide |
| Specificity: | Human MAPKAPK3 |
| Predicted Reactivity: | Percent identity by BLAST analysis: Human, Rabbit, Pig, Chicken (100%) Dog (92%). |
| Purification: | Immunoaffinity purified |

Target Details

| | |
|-------------------|---|
| Target: | MAPKAP Kinase 3 (MAPKAPK3) |
| Alternative Name: | MAPKAPK3 (MAPKAPK3 Products) |
| Background: | Name/Gene ID: MAPKAPK3 Subfamily: MAPKAPK Family: Protein Kinase Synonyms: MAPKAPK3, 3PK, Chromosome 3p kinase, MAPKAP kinase 3, MAPKAP-K3, MAPKAPK-3, MAPKAP3, MK-3 |
| Gene ID: | 7867 |
| NCBI Accession: | NP_004626 |
| UniProt: | Q16644 |
| Pathways: | MAPK Signaling , Neurotrophin Signaling Pathway , Activation of Innate immune Response , Toll-Like Receptors Cascades |

Application Details

| | |
|--------------------|--|
| Application Notes: | Approved: WB (0.2 - 1 µg/mL) Usage: Western Blot: Suggested dilution at 1 µg/mL in 5 % skim milk / PBS buffer, and HRP conjugated anti-Rabbit IgG should be diluted in 1: 50,000 - 100,000 as secondary antibody. |
| Comment: | Target Species of Antibody: Human |
| Restrictions: | For Research Use only |

Handling

| | |
|------------------|--|
| Format: | Lyophilized |
| Reconstitution: | Distilled water |
| Concentration: | Lot specific |
| Buffer: | Lyophilized from PBS with 2 % sucrose |
| Handling Advice: | Avoid repeat freeze-thaw cycles. |
| Storage: | 4 °C,-20 °C |
| Storage Comment: | Long term: -20°C, the use of 50% glycerol is recommended if storing aliquots in -20°C for long |

Handling

term use (up to 1 year)

Short term (less than 1 week): 4°C. Avoid freeze-thaw cycles.

Images

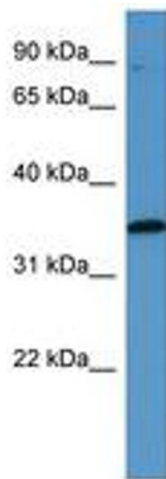


Image 1.