

Datasheet for ABIN6746809
anti-MKKNK1 antibody (C-Term)



[Go to Product page](#)

1 Image

Overview

Quantity:	100 µL
Target:	MKKNK1
Binding Specificity:	C-Term
Reactivity:	Human, Monkey
Host:	Rabbit
Clonality:	Polyclonal
Conjugate:	This MKKNK1 antibody is un-conjugated
Application:	Western Blotting (WB)

Product Details

Immunogen:	Synthetic peptide from C-Terminus of human MKKNK1 (Q9BUB5, NP_003675). Percent identity by BLAST analysis: Human, Gorilla, Monkey (100%). Type of Immunogen: Synthetic peptide
Specificity:	Human MKKNK1 / MNK1
Predicted Reactivity:	Percent identity by BLAST analysis: Human (100%).
Purification:	Immunoaffinity purified

Target Details

Target:	MKKNK1
Alternative Name:	MKKNK1 / MNK1 (MKKNK1 Products)

Target Details

Background:	Name/Gene ID: MKNK1 Subfamily: MNK Family: Protein Kinase Synonyms: MKNK1, MNK1, MAPK-Interacting Kinase 1
Gene ID:	8569
NCBI Accession:	NP_003675
UniProt:	Q9BUB5
Pathways:	MAPK Signaling , Cellular Response to Molecule of Bacterial Origin , Hepatitis C , Protein targeting to Nucleus , Toll-Like Receptors Cascades , Signaling of Hepatocyte Growth Factor Receptor

Application Details

Application Notes:	Approved: WB (0.2 - 1 µg/mL) Usage: Western Blot: Suggested dilution at 1 µg/mL in 5 % skim milk / PBS buffer, and HRP conjugated anti-Rabbit IgG should be diluted in 1: 50,000 - 100,000 as secondary antibody.
Comment:	Target Species of Antibody: Human
Restrictions:	For Research Use only

Handling

Format:	Lyophilized
Reconstitution:	Distilled water
Concentration:	Lot specific
Buffer:	Lyophilized from PBS with 2 % sucrose
Handling Advice:	Avoid repeat freeze-thaw cycles.
Storage:	4 °C,-20 °C
Storage Comment:	Long term: -20°C, the use of 50% glycerol is recommended if storing aliquots in -20°C for long term use (up to 1 year) Short term (less than 1 week): 4°C. Avoid freeze-thaw cycles.

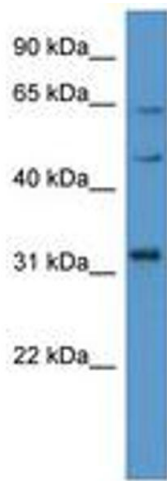


Image 1.