



[Go to Product page](#)

Datasheet for ABIN6746814
anti-SH3BP5 antibody (AA 215-264)

1 Image

Overview

Quantity:	100 µL
Target:	SH3BP5
Binding Specificity:	AA 215-264
Reactivity:	Human, Rabbit, Dog, Guinea Pig, Horse, Monkey, Bat
Host:	Rabbit
Clonality:	Polyclonal
Conjugate:	This SH3BP5 antibody is un-conjugated
Application:	Western Blotting (WB)

Product Details

Immunogen:	Synthetic peptide located between aa215-264 of human SH3BP5 (B3KQW6, NP_001018009). Percent identity by BLAST analysis: Human, Chimpanzee, Gorilla, Gibbon, Marmoset, Elephant, Dog, Bat, Rabbit, Horse, Guinea pig (100%), Galago, Mouse, Rat, Bovine, Opossum (92%), Zebra finch, Platypus, Lizard (85%). Type of Immunogen: Synthetic peptide
Specificity:	Human SH3BP5
Predicted Reactivity:	Percent identity by BLAST analysis: Human, Dog, Horse (100%) Rat, Bovine (92%).
Purification:	Immunoaffinity purified

Target Details

Target: SH3BP5

Alternative Name: SH3BP5 / SAB ([SH3BP5 Products](#))

Background: Name/Gene ID: SH3BP5

Synonyms: SH3BP5, SH3 domain-binding protein 5, SH3BP-5, SAB

Gene ID: 9467

NCBI Accession: [NP_001018009](#)

UniProt: [O60239](#)

Application Details

Application Notes: Approved: WB (0.2 - 1 µg/mL)

Usage: Western Blot: Suggested dilution at 1 µg/mL in 5 % skim milk / PBS buffer, and HRP conjugated anti-Rabbit IgG should be diluted in 1: 50,000 - 100,000 as secondary antibody.

Comment: Target Species of Antibody: Human

Restrictions: For Research Use only

Handling

Format: Lyophilized

Reconstitution: Distilled water

Concentration: Lot specific

Buffer: Lyophilized from PBS with 2 % sucrose

Handling Advice: Avoid repeat freeze-thaw cycles.

Storage: 4 °C, -20 °C

Storage Comment: Long term: -20°C, the use of 50% glycerol is recommended if storing aliquots in -20°C for long term use (up to 1 year)

Short term (less than 1 week): 4°C. Avoid freeze-thaw cycles.

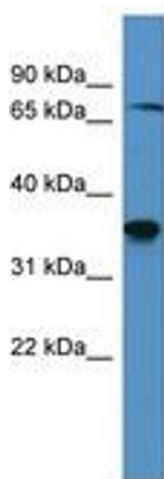


Image 1.