

Datasheet for ABIN6746820
anti-STYXL1 antibody (AA 140-189)



[Go to Product page](#)

1 Image

Overview

Quantity:	100 µL
Target:	STYXL1
Binding Specificity:	AA 140-189
Reactivity:	Human, Cow, Dog, Horse, Monkey
Host:	Rabbit
Clonality:	Polyclonal
Conjugate:	This STYXL1 antibody is un-conjugated
Application:	Western Blotting (WB)

Product Details

Immunogen:	Synthetic peptide located between aa140-189 of human STYXL1 (Q9Y6J8, NP_057170). Percent identity by BLAST analysis: Human, Gorilla, Gibbon, Monkey, Marmoset, Panda, Dog, Bovine, Horse (100%), Rabbit, Platypus (92%), Guinea pig (85%), Turkey, Chicken (84%). Type of Immunogen: Synthetic peptide
Specificity:	Human STYXL1
Predicted Reactivity:	Percent identity by BLAST analysis: Human, Dog, Bovine, Horse (100%) Rabbit (92%) Chicken (84%).
Purification:	Immunoaffinity purified

Target Details

Target:	STYXL1
Alternative Name:	STYXL1 (STYXL1 Products)
Background:	Name/Gene ID: STYXL1 Subfamily: Protein Phosphatase - Provisional Family: Protein Phosphatase Synonyms: STYXL1, MK-STYX, MKSTYX, DUSP24
Gene ID:	51657
NCBI Accession:	NP_057170
UniProt:	Q9Y6J8

Application Details

Application Notes:	Approved: WB (0.2 - 1 µg/mL) Usage: Western Blot: Suggested dilution at 1 µg/mL in 5 % skim milk / PBS buffer, and HRP conjugated anti-Rabbit IgG should be diluted in 1: 50,000 - 100,000 as secondary antibody.
Comment:	Target Species of Antibody: Human
Restrictions:	For Research Use only

Handling

Format:	Lyophilized
Reconstitution:	Distilled water
Concentration:	Lot specific
Buffer:	Lyophilized from PBS with 2 % sucrose
Handling Advice:	Avoid repeat freeze-thaw cycles.
Storage:	4 °C,-20 °C
Storage Comment:	Long term: -20°C, the use of 50% glycerol is recommended if storing aliquots in -20°C for long term use (up to 1 year) Short term (less than 1 week): 4°C. Avoid freeze-thaw cycles.

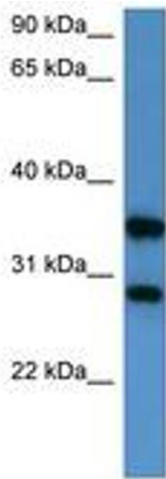


Image 1.