



[Go to Product page](#)

Datasheet for ABIN6746823
anti-ACBD6 antibody (AA 97-146)

1 Image

Overview

Quantity:	100 µL
Target:	ACBD6
Binding Specificity:	AA 97-146
Reactivity:	Human, Rabbit, Horse, Pig, Monkey
Host:	Rabbit
Clonality:	Polyclonal
Conjugate:	This ACBD6 antibody is un-conjugated
Application:	Western Blotting (WB)

Product Details

Immunogen:	Synthetic peptide located between aa97-146 of human ACBD6 (Q9BR61, NP_115736). Percent identity by BLAST analysis: Human, Chimpanzee, Gorilla, Gibbon, Monkey, Rabbit (100%), Panda, Dog, Bovine, Bat (92%), Marmoset, Elephant, Horse, Pig (85%). Type of Immunogen: Synthetic peptide
Specificity:	Human ACBD6
Predicted Reactivity:	Percent identity by BLAST analysis: Human (100%) Dog, Bovine (92%) Horse, Pig (85%).
Purification:	Immunoaffinity purified

Target Details

Target:	ACBD6
---------	-------

Target Details

Alternative Name: [ACBD6 \(ACBD6 Products\)](#)

Background: Name/Gene ID: ACBD6

Synonyms: ACBD6

Gene ID: 84320

NCBI Accession: [NP_115736](#)

UniProt: [Q9BR61](#)

Application Details

Application Notes: Approved: WB (1 µg/mL)

Usage: Western Blot: Suggested dilution at 1 µg/mL in 5 % skim milk / PBS buffer, and HRP conjugated anti-Rabbit IgG should be diluted in 1: 50,000 - 100,000 as secondary antibody.

Comment: Target Species of Antibody: Human

Restrictions: For Research Use only

Handling

Format: Lyophilized

Reconstitution: Distilled water

Concentration: Lot specific

Buffer: Lyophilized from PBS with 2 % sucrose

Handling Advice: Avoid repeat freeze-thaw cycles.

Storage: 4 °C, -20 °C

Storage Comment: Long term: -20°C, the use of 50% glycerol is recommended if storing aliquots in -20°C for long term use (up to 1 year)

Short term (less than 1 week): 4°C. Avoid freeze-thaw cycles.

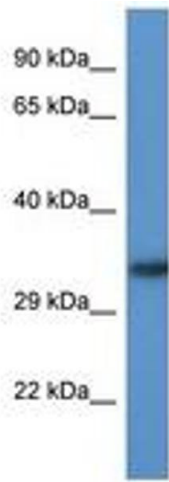


Image 1.