



Datasheet for ABIN6746829
anti-FLYWCH1 antibody (AA 304-353)



[Go to Product page](#)

1 Image

Overview

Quantity:	100 µL
Target:	FLYWCH1
Binding Specificity:	AA 304-353
Reactivity:	Human
Host:	Rabbit
Clonality:	Polyclonal
Conjugate:	This FLYWCH1 antibody is un-conjugated
Application:	Western Blotting (WB)

Product Details

Immunogen:	Synthetic peptide located between aa304-353 of human FLYWCH1 (Q4VC44, NP_115672). Percent identity by BLAST analysis: Human, Gorilla (100%), Gibbon, Galago, Marmoset, Rat, Panda, Dog, Horse (92%), Guinea pig (91%), Mouse (76%). Type of Immunogen: Synthetic peptide
Specificity:	Human FLYWCH1
Predicted Reactivity:	Percent identity by BLAST analysis: Dog, Horse (92%) Guinea pig (91%).
Purification:	Immunoaffinity purified

Target Details

Target:	FLYWCH1
---------	---------

Target Details

Alternative Name:	FLYWCH1 (FLYWCH1 Products)
Background:	Name/Gene ID: FLYWCH1 Synonyms: FLYWCH1, KIAA1552, FLYWCH-type zinc finger 1
Gene ID:	84256
NCBI Accession:	NP_115672
UniProt:	Q4VC44

Application Details

Application Notes:	Approved: WB (1 µg/mL) Usage: Western Blot: Suggested dilution at 1 µg/mL in 5 % skim milk / PBS buffer, and HRP conjugated anti-Rabbit IgG should be diluted in 1: 50,000 - 100,000 as secondary antibody.
Comment:	Target Species of Antibody: Human
Restrictions:	For Research Use only

Handling

Format:	Lyophilized
Reconstitution:	Distilled water
Concentration:	Lot specific
Buffer:	Lyophilized from PBS with 2 % sucrose
Handling Advice:	Avoid repeat freeze-thaw cycles.
Storage:	4 °C,-20 °C
Storage Comment:	Long term: -20°C, the use of 50% glycerol is recommended if storing aliquots in -20°C for long term use (up to 1 year) Short term (less than 1 week): 4°C. Avoid freeze-thaw cycles.

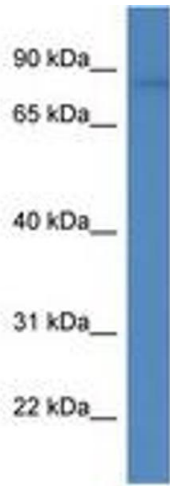


Image 1.