



[Go to Product page](#)

Datasheet for ABIN6746838
anti-NUDT22 antibody (AA 223-272)

1 Image

Overview

Quantity:	100 µL
Target:	NUDT22
Binding Specificity:	AA 223-272
Reactivity:	Human, Horse, Pig, Rabbit, Monkey
Host:	Rabbit
Clonality:	Polyclonal
Conjugate:	This NUDT22 antibody is un-conjugated
Application:	Western Blotting (WB)

Product Details

Immunogen:	Synthetic peptide located between aa223-272 of human NUDT22 (Q9BRQ3, NP_115720). Percent identity by BLAST analysis: Human, Chimpanzee, Gorilla, Gibbon, Monkey, Galago, Marmoset, Elephant (100%), Panda, Bovine, Rabbit, Horse, Pig (85%), Mouse, Rat (78%). Type of Immunogen: Synthetic peptide
Specificity:	Human NUDT22
Predicted Reactivity:	Percent identity by BLAST analysis: Human (100%) Rabbit, Horse, Pig (85%).
Purification:	Immunoaffinity purified

Target Details

Target:	NUDT22
---------	--------

Target Details

Alternative Name: [NUDT22 \(NUDT22 Products\)](#)

Background: Name/Gene ID: NUDT22

Synonyms: NUDT22, Nudix motif 22

Gene ID: 84304

NCBI Accession: [NP_115720](#)

UniProt: [Q9BRQ3](#)

Application Details

Application Notes: Approved: WB (1 µg/mL)

Usage: Western Blot: Suggested dilution at 1 µg/mL in 5 % skim milk / PBS buffer, and HRP conjugated anti-Rabbit IgG should be diluted in 1: 50,000 - 100,000 as secondary antibody.

Comment: Target Species of Antibody: Human

Restrictions: For Research Use only

Handling

Format: Lyophilized

Reconstitution: Distilled water

Concentration: Lot specific

Buffer: Lyophilized from PBS with 2 % sucrose

Handling Advice: Avoid repeat freeze-thaw cycles.

Storage: 4 °C, -20 °C

Storage Comment: Long term: -20°C, the use of 50% glycerol is recommended if storing aliquots in -20°C for long term use (up to 1 year)

Short term (less than 1 week): 4°C. Avoid freeze-thaw cycles.

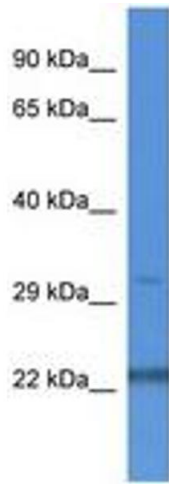


Image 1.