



[Go to Product page](#)

Datasheet for ABIN6746848  
**anti-ZCCHC7 antibody (AA 453-502)**

1 Image

Overview

Quantity:	100 µL
Target:	ZCCHC7
Binding Specificity:	AA 453-502
Reactivity:	Human
Host:	Rabbit
Clonality:	Polyclonal
Conjugate:	This ZCCHC7 antibody is un-conjugated
Application:	Western Blotting (WB)

Product Details

Immunogen:	Synthetic peptide located between aa453-502 of human ZCCHC7 (Q8N3Z6, NP_115602). Percent identity by BLAST analysis: Human, Chimpanzee, Gorilla, Gibbon (100%), Monkey, Marmoset (92%), Horse (85%).  Type of Immunogen: Synthetic peptide
Specificity:	Human ZCCHC7
Predicted Reactivity:	Percent identity by BLAST analysis: Human (100%).
Purification:	Immunoaffinity purified

Target Details

Target:	ZCCHC7
---------	--------

## Target Details

---

Alternative Name:	ZCCHC7 ( <a href="#">ZCCHC7 Products</a> )
Background:	Name/Gene ID: ZCCHC7  Synonyms: ZCCHC7, AIR1, HSPC086, RP11-397D12.1
Gene ID:	84186
NCBI Accession:	<a href="#">NP_115602</a>
UniProt:	<a href="#">Q8N3Z6</a>

## Application Details

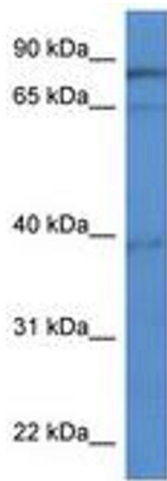
---

Application Notes:	Approved: WB (0.2 - 1 µg/mL)  Usage: Western Blot: Suggested dilution at 1 µg/mL in 5 % skim milk / PBS buffer, and HRP conjugated anti-Rabbit IgG should be diluted in 1: 50,000 - 100,000 as secondary antibody.
Comment:	Target Species of Antibody: Human
Restrictions:	For Research Use only

## Handling

---

Format:	Lyophilized
Reconstitution:	Distilled water
Concentration:	Lot specific
Buffer:	Lyophilized from PBS with 2 % sucrose
Handling Advice:	Avoid repeat freeze-thaw cycles.
Storage:	4 °C,-20 °C
Storage Comment:	Long term: -20°C, the use of 50% glycerol is recommended if storing aliquots in -20°C for long term use (up to 1 year)  Short term (less than 1 week): 4°C. Avoid freeze-thaw cycles.



**Image 1.**