



[Go to Product page](#)

Datasheet for ABIN6746855
anti-ROPN1L antibody (AA 44-93)

1 Image

Overview

Quantity:	100 µL
Target:	ROPN1L
Binding Specificity:	AA 44-93
Reactivity:	Human, Guinea Pig, Rabbit
Host:	Rabbit
Clonality:	Polyclonal
Conjugate:	This ROPN1L antibody is un-conjugated
Application:	Western Blotting (WB)

Product Details

Immunogen:	Synthetic peptide located between aa44-93 of human ROPN1L (Q96C74, NP_114122). Percent identity by BLAST analysis: Human, Gorilla, Marmoset (100%), Gibbon, Monkey, Galago, Mouse, Rat, Elephant, Dog, Bovine, Bat, Platypus (92%), Xenopus, Seabass (91%), Rabbit, Guinea pig, Zebrafish (85%). Type of Immunogen: Synthetic peptide
Specificity:	Human ROPN1L
Predicted Reactivity:	Percent identity by BLAST analysis: Mouse, Rat, Dog (92%) Rabbit, Guinea pig (85%).
Purification:	Immunoaffinity purified

Target Details

Target:	ROPN1L
Alternative Name:	ROPN1L (ROPN1L Products)
Background:	Name/Gene ID: ROPN1L Synonyms: ROPN1L, AKAP-associated sperm protein, ROPN1-like protein, Ropporin-1-like protein, RSPH11, ASP, Radial spoke head 11 homolog, Ropporin 1-like
Gene ID:	83853
NCBI Accession:	NP_114122
UniProt:	Q96C74

Application Details

Application Notes:	Approved: WB (0.2 - 1 µg/mL) Usage: Western Blot: Suggested dilution at 1 µg/mL in 5 % skim milk / PBS buffer, and HRP conjugated anti-Rabbit IgG should be diluted in 1: 50,000 - 100,000 as secondary antibody.
Comment:	Target Species of Antibody: Human
Restrictions:	For Research Use only

Handling

Format:	Lyophilized
Reconstitution:	Distilled water
Concentration:	Lot specific
Buffer:	Lyophilized from PBS with 2 % sucrose
Handling Advice:	Avoid repeat freeze-thaw cycles.
Storage:	4 °C, -20 °C
Storage Comment:	Long term: -20°C, the use of 50% glycerol is recommended if storing aliquots in -20°C for long term use (up to 1 year) Short term (less than 1 week): 4°C. Avoid freeze-thaw cycles.

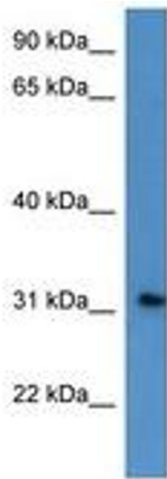


Image 1.