



[Go to Product page](#)

Datasheet for ABIN6746857  
**anti-RAB34 antibody (C-Term)**

1 Image

Overview

Quantity:	100 µL
Target:	RAB34
Binding Specificity:	C-Term
Reactivity:	Human, Rat, Cow, Rabbit, Bat
Host:	Rabbit
Clonality:	Polyclonal
Conjugate:	This RAB34 antibody is un-conjugated
Application:	Western Blotting (WB)

Product Details

Immunogen:	Synthetic peptide from C-Terminus of human RAB34 (Q9BZG1, NP_114140). Percent identity by BLAST analysis: Human, Chimpanzee, Gorilla, Galago, Rat, Elephant, Bovine, Bat (100%), Gibbon, Marmoset, Mouse, Hamster, Dog, Horse, Pig, Guinea pig (92%), Rabbit (85%).  Type of Immunogen: Synthetic peptide
Specificity:	Human RAB34
Predicted Reactivity:	Percent identity by BLAST analysis: Human, Bovine (100%) Mouse, Rat, Dog, Pig, Guinea pig (92%) Rabbit (85%).
Purification:	Immunoaffinity purified

## Target Details

---

Target:	RAB34
Alternative Name:	RAB34 ( <a href="#">RAB34 Products</a> )
Background:	Name/Gene ID: RAB34 Subfamily: RAS oncogene Family: Ras GTPase superfamily IPR001806  Synonyms: RAB34, RAH, Ras-related protein Rab-34, Ras-related protein Rab-39, Ras-related protein Rah, RAB39
Gene ID:	83871
NCBI Accession:	<a href="#">NP_114140</a>
UniProt:	<a href="#">Q9BZG1</a>

## Application Details

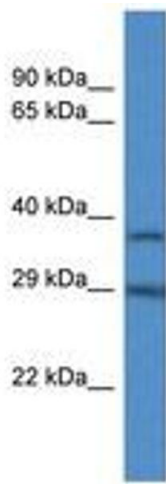
---

Application Notes:	Approved: WB (1 µg/mL)  Usage: Western Blot: Suggested dilution at 1 µg/mL in 5 % skim milk / PBS buffer, and HRP conjugated anti-Rabbit IgG should be diluted in 1: 50,000 - 100,000 as secondary antibody.
Comment:	Target Species of Antibody: Human
Restrictions:	For Research Use only

## Handling

---

Format:	Lyophilized
Reconstitution:	Distilled water
Concentration:	Lot specific
Buffer:	Lyophilized from PBS with 2 % sucrose
Handling Advice:	Avoid repeat freeze-thaw cycles.
Storage:	4 °C, -20 °C
Storage Comment:	Long term: -20°C, the use of 50% glycerol is recommended if storing aliquots in -20°C for long term use (up to 1 year) Short term (less than 1 week): 4°C. Avoid freeze-thaw cycles.



**Image 1.**