

Datasheet for ABIN6746859
anti-TBC1D10A antibody (AA 391-440)[Go to Product page](#)

1 Image

Overview

Quantity:	100 µL
Target:	TBC1D10A
Binding Specificity:	AA 391-440
Reactivity:	Human, Guinea Pig
Host:	Rabbit
Clonality:	Polyclonal
Conjugate:	This TBC1D10A antibody is un-conjugated
Application:	Western Blotting (WB)

Product Details

Immunogen:	Synthetic peptide located between aa391-440 of human TBC1D10A (Q9BXI6, NP_114143). Percent identity by BLAST analysis: Human, Chimpanzee, Gorilla, Gibbon, Guinea pig (100%), Marmoset (84%). Type of Immunogen: Synthetic peptide
Specificity:	Human TBC1D10A
Predicted Reactivity:	Percent identity by BLAST analysis: Human (100%).
Purification:	Immunoaffinity purified

Target Details

Target:	TBC1D10A
---------	----------

Target Details

Alternative Name:	TBC1D10A (TBC1D10A Products)
Background:	<p>Name/Gene ID: TBC1D10A</p> <p>Synonyms: TBC1D10A, AC004997.C22.2, DJ130H16.1, EBP50-PDZ interactor of 64 kD, DJ130H16.2, EPI64 protein, EBP50-PDX interactor of 64 kDa, EPI64, TBC1 domain family member 10A, TBC1 domain family, member 10A, Rab27A-GAP-alpha, TBC1 domain family, member 10, TBC1D10</p>
Gene ID:	83874
NCBI Accession:	NP_114143
UniProt:	Q9BXI6
Pathways:	Positive Regulation of Endopeptidase Activity

Application Details

Application Notes:	<p>Approved: WB (0.2 - 1 µg/mL)</p> <p>Usage: Western Blot: Suggested dilution at 1 µg/mL in 5 % skim milk / PBS buffer, and HRP conjugated anti-Rabbit IgG should be diluted in 1: 50,000 - 100,000 as secondary antibody.</p>
Comment:	Target Species of Antibody: Human
Restrictions:	For Research Use only

Handling

Format:	Lyophilized
Reconstitution:	Distilled water
Concentration:	Lot specific
Buffer:	Lyophilized from PBS with 2 % sucrose
Handling Advice:	Avoid repeat freeze-thaw cycles.
Storage:	4 °C, -20 °C
Storage Comment:	<p>Long term: -20°C, the use of 50% glycerol is recommended if storing aliquots in -20°C for long term use (up to 1 year)</p> <p>Short term (less than 1 week): 4°C. Avoid freeze-thaw cycles.</p>

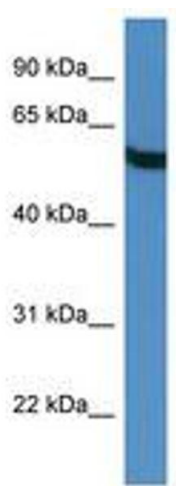


Image 1.