



[Go to Product page](#)

Datasheet for ABIN6746862
anti-TM2D2 antibody (AA 97-146)

1 Image

Overview

Quantity:	100 µL
Target:	TM2D2
Binding Specificity:	AA 97-146
Reactivity:	Human, Guinea Pig, Rabbit, Rat, Bat, Hamster, Monkey, Pig
Host:	Rabbit
Clonality:	Polyclonal
Conjugate:	This TM2D2 antibody is un-conjugated
Application:	Western Blotting (WB)

Product Details

Immunogen:	Synthetic peptide located between aa97-146 of human TM2D2 (Q9BX73, NP_510882). Percent identity by BLAST analysis: Human, Chimpanzee, Gorilla, Orangutan, Monkey, Galago, Marmoset, Rat, Hamster, Elephant, Panda, Bat, Rabbit, Pig, Guinea pig (100%), Gibbon, Mouse, Goat, Dog, Bovine, Horse, Opossum, Xenopus (92%), Platypus (85%). Type of Immunogen: Synthetic peptide
Specificity:	Human TM2D2
Predicted Reactivity:	Percent identity by BLAST analysis: Human, Rat, Pig (100%) Mouse, Dog, Bovine, Goat, Xenopus (92%).
Purification:	Immunoaffinity purified

Target Details

Target:	TM2D2
Alternative Name:	TM2D2 (TM2D2 Products)
Background:	Name/Gene ID: TM2D2 Synonyms: TM2D2, BLP1, BBP-like protein 1, TM2 domain containing 2
Gene ID:	83877
NCBI Accession:	NP_510882
UniProt:	Q9BX73

Application Details

Application Notes:	Approved: WB (0.2 - 1 µg/mL) Usage: Western Blot: Suggested dilution at 1 µg/mL in 5 % skim milk / PBS buffer, and HRP conjugated anti-Rabbit IgG should be diluted in 1: 50,000 - 100,000 as secondary antibody.
Comment:	Target Species of Antibody: Human
Restrictions:	For Research Use only

Handling

Format:	Lyophilized
Reconstitution:	Distilled water
Concentration:	Lot specific
Buffer:	Lyophilized from PBS with 2 % sucrose
Handling Advice:	Avoid repeat freeze-thaw cycles.
Storage:	4 °C, -20 °C
Storage Comment:	Long term: -20°C, the use of 50% glycerol is recommended if storing aliquots in -20°C for long term use (up to 1 year) Short term (less than 1 week): 4°C. Avoid freeze-thaw cycles.

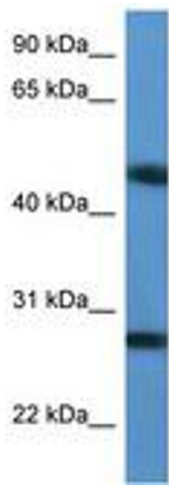


Image 1.