



[Go to Product page](#)

Datasheet for ABIN6746864  
**anti-KRTAP1-5 antibody (AA 93-142)**

1 Image

Overview

Quantity:	100 µL
Target:	KRTAP1-5
Binding Specificity:	AA 93-142
Reactivity:	Human
Host:	Rabbit
Clonality:	Polyclonal
Conjugate:	This KRTAP1-5 antibody is un-conjugated
Application:	Western Blotting (WB)

Product Details

Immunogen:	Synthetic peptide located between aa93-142 of human KRTAP1-5 (Q9BYS1, NP_114163). Percent identity by BLAST analysis: Human (100%), Monkey (92%), Mouse, Rat, Sheep, Elephant, Bovine, Horse (91%).  Type of Immunogen: Synthetic peptide
Specificity:	Human KRTAP1-5
Predicted Reactivity:	Percent identity by BLAST analysis: Human (100%) Rat (91%) Mouse (85%).
Purification:	Immunoaffinity purified

Target Details

Target:	KRTAP1-5
---------	----------

## Target Details

---

Alternative Name:	KRTAP1-5 ( <a href="#">KRTAP1-5 Products</a> )
Background:	Name/Gene ID: KRTAP1-5  Synonyms: KRTAP1-5, Keratin associated protein 1.5, Keratin-associated protein 1.5, Keratin associated protein 1-5, Keratin-associated protein 1-5, KRTAP-15, KAP1.5, KRTAP1.5
Gene ID:	83895
NCBI Accession:	<a href="#">NP_114163</a>
UniProt:	<a href="#">Q9BYS1</a>

## Application Details

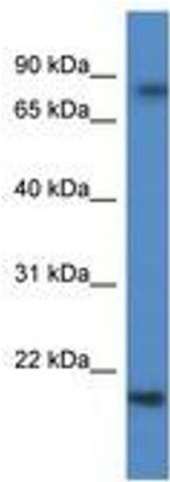
---

Application Notes:	Approved: WB (1 µg/mL)  Usage: Western Blot: Suggested dilution at 1 µg/mL in 5 % skim milk / PBS buffer, and HRP conjugated anti-Rabbit IgG should be diluted in 1: 50,000 - 100,000 as secondary antibody.
Comment:	Target Species of Antibody: Human
Restrictions:	For Research Use only

## Handling

---

Format:	Lyophilized
Reconstitution:	Distilled water
Concentration:	Lot specific
Buffer:	Lyophilized from PBS with 2 % sucrose
Handling Advice:	Avoid repeat freeze-thaw cycles.
Storage:	4 °C, -20 °C
Storage Comment:	Long term: -20°C, the use of 50% glycerol is recommended if storing aliquots in -20°C for long term use (up to 1 year) Short term (less than 1 week): 4°C. Avoid freeze-thaw cycles.



**Image 1.**