



[Go to Product page](#)

Datasheet for ABIN6746867
anti-TUBA1C antibody (C-Term)

1 Image

Overview

Quantity:	100 µL
Target:	TUBA1C
Binding Specificity:	C-Term
Reactivity:	Human, Xenopus laevis
Host:	Rabbit
Clonality:	Polyclonal
Conjugate:	This TUBA1C antibody is un-conjugated
Application:	Western Blotting (WB)

Product Details

Immunogen:	Synthetic peptide from C-Terminus of human TUBA1C (Q9BQE3, NP_116093). Percent identity by BLAST analysis: Human, Chimpanzee, Gorilla, Gibbon, Xenopus (100%), Mouse, Rat, Hamster, Elephant, Dog, Bovine, Rabbit, Horse, Pig, Guinea pig, Zebra finch, Chicken (92%), Zebrafish (86%), Bat, Salmon, Blood fluke, Sea squirt, Nematode, Poplar, Grape (85%). Type of Immunogen: Synthetic peptide
Specificity:	Human TUBA1C
Predicted Reactivity:	Percent identity by BLAST analysis: Human (100%) Mouse, Dog, Horse, Guinea pig (92%).
Purification:	Immunoaffinity purified

Target Details

Target:	TUBA1C
Alternative Name:	TUBA1C (TUBA1C Products)
Background:	Name/Gene ID: TUBA1C Synonyms: TUBA1C, Alpha-tubulin 6, Tubulin alpha-1C chain, Tubulin, alpha 6, Bcm948, TUBA6, Tubulin alpha-6 chain, Tubulin, alpha 1c
Gene ID:	84790
NCBI Accession:	NP_116093
Pathways:	Microtubule Dynamics, M Phase

Application Details

Application Notes:	Approved: WB (0.2 - 1 µg/mL) Usage: Western Blot: Suggested dilution at 1 µg/mL in 5 % skim milk / PBS buffer, and HRP conjugated anti-Rabbit IgG should be diluted in 1: 50,000 - 100,000 as secondary antibody.
Comment:	Target Species of Antibody: Human
Restrictions:	For Research Use only

Handling

Format:	Lyophilized
Reconstitution:	Distilled water
Concentration:	Lot specific
Buffer:	Lyophilized from PBS with 2 % sucrose
Handling Advice:	Avoid repeat freeze-thaw cycles.
Storage:	4 °C, -20 °C
Storage Comment:	Long term: -20°C, the use of 50% glycerol is recommended if storing aliquots in -20°C for long term use (up to 1 year) Short term (less than 1 week): 4°C. Avoid freeze-thaw cycles.

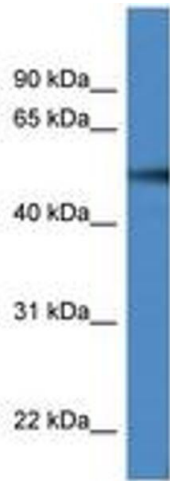


Image 1.