

Datasheet for ABIN6746869
anti-LONP2 antibody (AA 570-619)[Go to Product page](#)

1 Image

Overview

Quantity:	100 µL
Target:	LONP2
Binding Specificity:	AA 570-619
Reactivity:	Human, Mouse, Horse, Pig
Host:	Rabbit
Clonality:	Polyclonal
Conjugate:	This LONP2 antibody is un-conjugated
Application:	Western Blotting (WB)

Product Details

Immunogen:	Synthetic peptide located between aa570-619 of human LONP2 (Q86WA8, NP_113678). Percent identity by BLAST analysis: Human, Chimpanzee, Gorilla, Orangutan, Monkey (100%), Gibbon, Marmoset, Dog (92%), Mouse, Horse, Opossum (85%), Zebra finch (84%). Type of Immunogen: Synthetic peptide
Specificity:	Human LONP2
Predicted Reactivity:	Percent identity by BLAST analysis: Human (100%) Dog (92%) Mouse, Horse (85%).
Purification:	Immunoaffinity purified

Target Details

Target:	LONP2
---------	-------

Target Details

Alternative Name:	LONP2 / LONP (LONP2 Products)
Background:	Name/Gene ID: LONP2 Subfamily: Provisional protease Family: Protease Synonyms: LONP2, Lon protease 2, Lon protease-like protein 2, LONPL, LONP, Peroxisomal LON protease like, Peroxisomal Lon protease, Lon peptidase 2, peroxisomal
Gene ID:	83752
NCBI Accession:	NP_113678
UniProt:	Q86WA8

Application Details

Application Notes:	Approved: WB (0.2 - 1 µg/mL) Usage: Western Blot: Suggested dilution at 1 µg/mL in 5 % skim milk / PBS buffer, and HRP conjugated anti-Rabbit IgG should be diluted in 1: 50,000 - 100,000 as secondary antibody.
Comment:	Target Species of Antibody: Human
Restrictions:	For Research Use only

Handling

Format:	Lyophilized
Reconstitution:	Distilled water
Concentration:	Lot specific
Buffer:	Lyophilized from PBS with 2 % sucrose
Handling Advice:	Avoid repeat freeze-thaw cycles.
Storage:	4 °C,-20 °C
Storage Comment:	Long term: -20°C, the use of 50% glycerol is recommended if storing aliquots in -20°C for long term use (up to 1 year) Short term (less than 1 week): 4°C. Avoid freeze-thaw cycles.

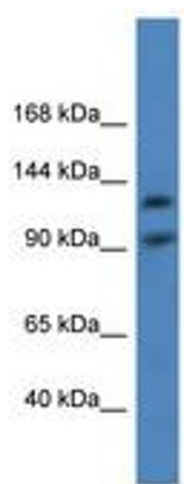


Image 1.