



[Go to Product page](#)

Datasheet for ABIN6746871  
**anti-CD99L2 antibody (AA 79-128)**

1 Image

### Overview

|                      |                                       |
|----------------------|---------------------------------------|
| Quantity:            | 100 µL                                |
| Target:              | CD99L2                                |
| Binding Specificity: | AA 79-128                             |
| Reactivity:          | Human, Mouse, Cow, Horse, Rabbit      |
| Host:                | Rabbit                                |
| Clonality:           | Polyclonal                            |
| Conjugate:           | This CD99L2 antibody is un-conjugated |
| Application:         | Western Blotting (WB)                 |

### Product Details

|                       |  |
|-----------------------|--|
| Immunogen:            | Synthetic peptide located between aa79-128 of human CD99L2 (NP_604395). Percent identity by BLAST analysis: Human, Chimpanzee, Gorilla, Orangutan, Gibbon, Monkey, Galago, Bovine, Horse (100%), Marmoset, Elephant, Panda, Dog, Pig (92%), Mouse, Rat, Bat, Rabbit (85%).<br><br>Type of Immunogen: Synthetic peptide |
| Specificity:          | Human CD99L2   |
| Predicted Reactivity: | Percent identity by BLAST analysis: Human, Horse (100%) Dog, Pig (92%) Mouse, Rabbit (85%).  |
| Purification:         | Immunoaffinity purified  |

### Target Details

|         |        |
|---------|--------|
| Target: | CD99L2 |
|---------|--------|

## Target Details

---

Alternative Name: [CD99L2 \(CD99L2 Products\)](#)

Background: Name/Gene ID: CD99L2

Synonyms: CD99L2, CD99 antigen, CD99B, CD99 antigen-like 2, CD99 Molecule-like 2, MIC2L1, MIC2-like protein 1, CD99 antigen-like protein 2, MIC2 like 1

Gene ID: 83692

NCBI Accession: [NP\\_604395](#)

UniProt: [Q8TCZ2](#)

## Application Details

---

Application Notes: Approved: WB (1 µg/mL)

Usage: Western Blot: Suggested dilution at 1 µg/mL in 5 % skim milk / PBS buffer, and HRP conjugated anti-Rabbit IgG should be diluted in 1: 50,000 - 100,000 as secondary antibody.

Comment: Target Species of Antibody: Human

Restrictions: For Research Use only

## Handling

---

Format: Lyophilized

Reconstitution: Distilled water

Concentration: Lot specific

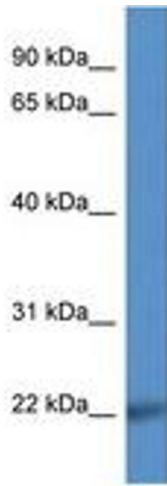
Buffer: Lyophilized from PBS with 2 % sucrose

Handling Advice: Avoid repeat freeze-thaw cycles.

Storage: 4 °C, -20 °C

Storage Comment: Long term: -20°C, the use of 50% glycerol is recommended if storing aliquots in -20°C for long term use (up to 1 year)

Short term (less than 1 week): 4°C. Avoid freeze-thaw cycles.



**Image 1.**