



Datasheet for ABIN6746881
anti-ATAD1 antibody (AA 263-312)



[Go to Product page](#)

1 Image

Overview

Quantity:	100 µL
Target:	ATAD1
Binding Specificity:	AA 263-312
Reactivity:	Human, Mouse, Rat, Dog, Horse, Rabbit, Cow, Pig, Monkey, Xenopus laevis, Bat
Host:	Rabbit
Clonality:	Polyclonal
Conjugate:	This ATAD1 antibody is un-conjugated
Application:	Western Blotting (WB)

Product Details

Immunogen:	Synthetic peptide located between aa263-312 of human ATAD1 (Q8NBU5, NP_116199). Percent identity by BLAST analysis: Human, Chimpanzee, Gorilla, Orangutan, Gibbon, Monkey, Galago, Marmoset, Mouse, Rat, Elephant, Dog, Bovine, Bat, Rabbit, Horse, Pig, Xenopus (100%), Opossum, Guinea pig, Turkey, Zebra finch, Chicken, Platypus (92%), Beetle (90%), Stickleback (85%). Type of Immunogen: Synthetic peptide
Specificity:	Human ATAD1
Predicted Reactivity:	Percent identity by BLAST analysis: Human, Mouse, Rat, Dog, Bovine, Rabbit, Horse, Pig (100%), Guinea pig, Chicken (92%).
Purification:	Immunoaffinity purified

Target Details

Target:	ATAD1
Alternative Name:	ATAD1 (ATAD1 Products)
Background:	Name/Gene ID: ATAD1 Synonyms: ATAD1, AFDC1, FNP001, THORASE
Gene ID:	84896
NCBI Accession:	NP_116199
UniProt:	Q8NBU5
Pathways:	Synaptic Membrane

Application Details

Application Notes:	Approved: WB (0.2 - 1 µg/mL) Usage: Western Blot: Suggested dilution at 1 µg/mL in 5 % skim milk / PBS buffer, and HRP conjugated anti-Rabbit IgG should be diluted in 1: 50,000 - 100,000 as secondary antibody.
Comment:	Target Species of Antibody: Human
Restrictions:	For Research Use only

Handling

Format:	Lyophilized
Reconstitution:	Distilled water
Concentration:	Lot specific
Buffer:	Lyophilized from PBS with 2 % sucrose
Handling Advice:	Avoid repeat freeze-thaw cycles.
Storage:	4 °C,-20 °C
Storage Comment:	Long term: -20°C, the use of 50% glycerol is recommended if storing aliquots in -20°C for long term use (up to 1 year) Short term (less than 1 week): 4°C. Avoid freeze-thaw cycles.

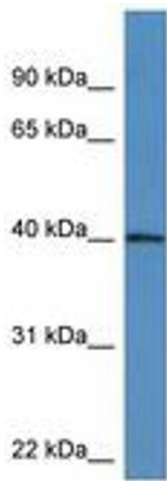


Image 1.