



Datasheet for ABIN6746882
anti-PPP1R15B antibody (AA 480-529)



[Go to Product page](#)

1 Image

Overview

Quantity:	100 µL
Target:	PPP1R15B
Binding Specificity:	AA 480-529
Reactivity:	Human
Host:	Rabbit
Clonality:	Polyclonal
Conjugate:	This PPP1R15B antibody is un-conjugated
Application:	Western Blotting (WB)

Product Details

Immunogen: Synthetic peptide located between aa480-529 of human PPP1R15B (Q5SWA1, NP_116222).
Percent identity by BLAST analysis: Human, Chimpanzee, Gibbon, Marmoset (100%), Gorilla, Monkey (92%), Bovine (91%), Bat (84%).

Type of Immunogen: Synthetic peptide

Specificity: Human PPP1R15B

Predicted Reactivity: Percent identity by BLAST analysis: Human (100%) Bovine (91%).

Purification: Immunoaffinity purified

Target Details

Target: PPP1R15B

Target Details

Alternative Name: [PPP1R15B \(PPP1R15B Products\)](#)

Background: Name/Gene ID: PPP1R15B

Synonyms: PPP1R15B, CREP

Gene ID: 84919

NCBI Accession: [NP_116222](#)

UniProt: [Q5SWA1](#)

Pathways: [ER-Nucleus Signaling](#)

Application Details

Application Notes: Approved: WB (1 µg/mL)

Usage: Western Blot: Suggested dilution at 1 µg/mL in 5 % skim milk / PBS buffer, and HRP conjugated anti-Rabbit IgG should be diluted in 1: 50,000 - 100,000 as secondary antibody.

Comment: Target Species of Antibody: Human

Restrictions: For Research Use only

Handling

Format: Lyophilized

Reconstitution: Distilled water

Concentration: Lot specific

Buffer: Lyophilized from PBS with 2 % sucrose

Handling Advice: Avoid repeat freeze-thaw cycles.

Storage: 4 °C, -20 °C

Storage Comment: Long term: -20°C, the use of 50% glycerol is recommended if storing aliquots in -20°C for long term use (up to 1 year)

Short term (less than 1 week): 4°C. Avoid freeze-thaw cycles.

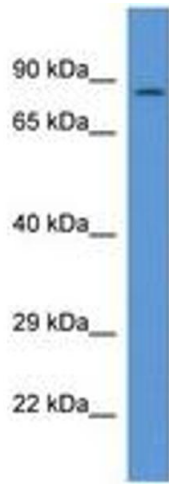


Image 1.