



Datasheet for ABIN6746883  
**anti-SPRYD3 antibody (AA 98-147)**



[Go to Product page](#)

1 Image

Overview

Quantity:	100 µL
Target:	SPRYD3
Binding Specificity:	AA 98-147
Reactivity:	Human, Mouse, Rat, Horse, Rabbit, Cow, Dog, Guinea Pig, Monkey, Pig, Bat
Host:	Rabbit
Clonality:	Polyclonal
Conjugate:	This SPRYD3 antibody is un-conjugated
Application:	Western Blotting (WB)

Product Details

Immunogen:	Synthetic peptide located between aa98-147 of human SPRYD3 (Q8NCJ5, NP_116229). Percent identity by BLAST analysis: Human, Chimpanzee, Gorilla, Orangutan, Gibbon, Monkey, Galago, Marmoset, Mouse, Rat, Elephant, Dog, Bovine, Bat, Rabbit, Horse, Pig, Guinea pig (100%), Xenopus (83%).  Type of Immunogen: Synthetic peptide
Specificity:	Human SPRYD3
Predicted Reactivity:	Percent identity by BLAST analysis: Human, Mouse, Rat, Dog, Bovine, Rabbit, Horse, Pig (100%) Xenopus (83%).
Purification:	Immunoaffinity purified

## Target Details

---

Target: SPRYD3

Alternative Name: SPRYD3 ([SPRYD3 Products](#))

Background: Name/Gene ID: SPRYD3

Synonyms: SPRYD3, SPRY domain containing 3

Gene ID: 84926

NCBI Accession: [NP\\_116229](#)

UniProt: [Q8NCJ5](#)

## Application Details

---

Application Notes: Approved: WB (1 µg/mL)

Usage: Western Blot: Suggested dilution at 1 µg/mL in 5 % skim milk / PBS buffer, and HRP conjugated anti-Rabbit IgG should be diluted in 1: 50,000 - 100,000 as secondary antibody.

Comment: Target Species of Antibody: Human

Restrictions: For Research Use only

## Handling

---

Format: Lyophilized

Reconstitution: Distilled water

Concentration: Lot specific

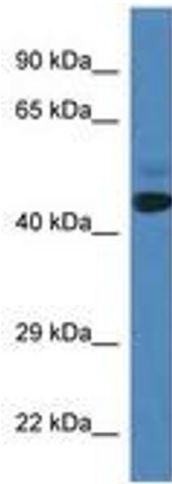
Buffer: Lyophilized from PBS with 2 % sucrose

Handling Advice: Avoid repeat freeze-thaw cycles.

Storage: 4 °C, -20 °C

Storage Comment: Long term: -20°C, the use of 50% glycerol is recommended if storing aliquots in -20°C for long term use (up to 1 year)

Short term (less than 1 week): 4°C. Avoid freeze-thaw cycles.



**Image 1.**