



[Go to Product page](#)

Datasheet for ABIN6746887
anti-HSH2D antibody (AA 267-316)

1 Image

Overview

Quantity:	100 µL
Target:	HSH2D
Binding Specificity:	AA 267-316
Reactivity:	Human
Host:	Rabbit
Clonality:	Polyclonal
Conjugate:	This HSH2D antibody is un-conjugated
Application:	Western Blotting (WB)

Product Details

Immunogen:	Synthetic peptide located between aa267-316 of human HSH2D (Q96JZ2, NP_116244). Percent identity by BLAST analysis: Human, Chimpanzee, Gorilla, Gibbon (100%), Monkey (92%). Type of Immunogen: Synthetic peptide
Specificity:	Human HSH2D
Predicted Reactivity:	Percent identity by BLAST analysis: Human (100%).
Purification:	Immunoaffinity purified

Target Details

Target:	HSH2D
Alternative Name:	ALX / HSH2D (HSH2D Products)

Target Details

Background:	Name/Gene ID: HSH2D Synonyms: HSH2D, ALX, Hematopoietic SH2 protein, HSH2
Gene ID:	84941
NCBI Accession:	NP_116244
UniProt:	Q96JZ2

Application Details

Application Notes:	Approved: WB (0.2 - 1 µg/mL) Usage: Western Blot: Suggested dilution at 1 µg/mL in 5 % skim milk / PBS buffer, and HRP conjugated anti-Rabbit IgG should be diluted in 1: 50,000 - 100,000 as secondary antibody.
Comment:	Target Species of Antibody: Human
Restrictions:	For Research Use only

Handling

Format:	Lyophilized
Reconstitution:	Distilled water
Concentration:	Lot specific
Buffer:	Lyophilized from PBS with 2 % sucrose
Handling Advice:	Avoid repeat freeze-thaw cycles.
Storage:	4 °C, -20 °C
Storage Comment:	Long term: -20°C, the use of 50% glycerol is recommended if storing aliquots in -20°C for long term use (up to 1 year) Short term (less than 1 week): 4°C. Avoid freeze-thaw cycles.

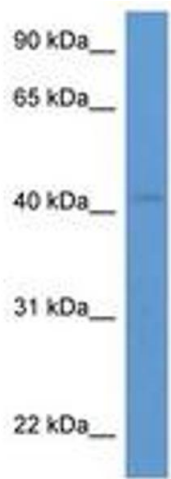


Image 1.