



[Go to Product page](#)

Datasheet for ABIN6746894
anti-FBXL20 antibody (AA 110-159)

1 Image

Overview

Quantity:	100 µL
Target:	FBXL20
Binding Specificity:	AA 110-159
Reactivity:	Human, Rat, Mouse, Dog, Cow, Guinea Pig, Horse, Rabbit, Monkey, Pig, Bat
Host:	Rabbit
Clonality:	Polyclonal
Conjugate:	This FBXL20 antibody is un-conjugated
Application:	Western Blotting (WB)

Product Details

Immunogen:	Synthetic peptide located between aa110-159 of human FBXL20 (Q96IG2, NP_116264). Percent identity by BLAST analysis: Human, Chimpanzee, Gorilla, Gibbon, Galago, Marmoset, Mouse, Rat, Elephant, Dog, Bovine, Bat, Rabbit, Horse, Pig, Opossum, Guinea pig, Platypus (100%), Turkey, Zebra finch, Chicken, Lizard (92%). Type of Immunogen: Synthetic peptide
Specificity:	Human FBXL20
Predicted Reactivity:	Percent identity by BLAST analysis: Mouse, Rat, Dog, Rabbit, Horse, Guinea pig (100%) Chicken (92%).
Purification:	Immunoaffinity purified

Target Details

Target:	FBXL20
Alternative Name:	FBXL20 (FBXL20 Products)
Background:	Name/Gene ID: FBXL20 Family: F-Box Synonyms: FBXL20, Fbl20, F-box/LRR-repeat protein 20, F-box protein FBL2, Fbl2
Gene ID:	84961
NCBI Accession:	NP_116264
UniProt:	Q96IG2

Application Details

Application Notes:	Approved: WB (1 µg/mL) Usage: Western Blot: Suggested dilution at 1 µg/mL in 5 % skim milk / PBS buffer, and HRP conjugated anti-Rabbit IgG should be diluted in 1: 50,000 - 100,000 as secondary antibody.
Comment:	Target Species of Antibody: Human
Restrictions:	For Research Use only

Handling

Format:	Lyophilized
Reconstitution:	Reconstitute with 50 µL sterile ddH ₂ O.
Concentration:	Lot specific
Buffer:	Lyophilized from PBS with 2 % sucrose
Handling Advice:	Avoid repeat freeze-thaw cycles.
Storage:	4 °C, -20 °C
Storage Comment:	Long term: -20°C, the use of 50% glycerol is recommended if storing aliquots in -20°C for long term use (up to 1 year) Short term (less than 1 week): 4°C. Avoid freeze-thaw cycles.

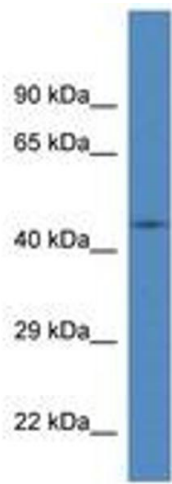


Image 1.