

Datasheet for ABIN6746895 anti-PNMA6A antibody (AA 49-98)



[Go to Product page](#)

1 Image

Overview

Quantity:	100 µL
Target:	PNMA6A
Binding Specificity:	AA 49-98
Reactivity:	Human, Dog
Host:	Rabbit
Clonality:	Polyclonal
Conjugate:	This PNMA6A antibody is un-conjugated
Application:	Western Blotting (WB)

Product Details

Immunogen:	Synthetic peptide located between aa49-98 of human PNMA6A (P0C5W0, NP_116271). Percent identity by BLAST analysis: Human, Gorilla, Dog (100%). Type of Immunogen: Synthetic peptide
Specificity:	Human PNMA6A
Predicted Reactivity:	Percent identity by BLAST analysis: Dog (100%).
Purification:	Immunoaffinity purified

Target Details

Target:	PNMA6A
Alternative Name:	PNMA6A (PNMA6A Products)

Target Details

Background:	Name/Gene ID: PNMA6A Synonyms: PNMA6A, MA6, PNMA6, Paraneoplastic antigen like 6A
Gene ID:	84968
NCBI Accession:	NP_116271
UniProt:	P0C5W0

Application Details

Application Notes:	Approved: WB (0.2 - 1 µg/mL) Usage: Western Blot: Suggested dilution at 1 µg/mL in 5 % skim milk / PBS buffer, and HRP conjugated anti-Rabbit IgG should be diluted in 1: 50,000 - 100,000 as secondary antibody.
Comment:	Target Species of Antibody: Human
Restrictions:	For Research Use only

Handling

Format:	Lyophilized
Reconstitution:	Distilled water
Concentration:	Lot specific
Buffer:	Lyophilized from PBS with 2 % sucrose
Handling Advice:	Avoid repeat freeze-thaw cycles.
Storage:	4 °C, -20 °C
Storage Comment:	Long term: -20°C, the use of 50% glycerol is recommended if storing aliquots in -20°C for long term use (up to 1 year) Short term (less than 1 week): 4°C. Avoid freeze-thaw cycles.

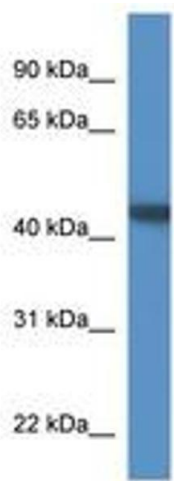


Image 1.