

Datasheet for ABIN6746898
anti-IFNA1 antibody (C-Term)



[Go to Product page](#)

1 Image

Overview

| | |
|----------------------|--------------------------------------|
| Quantity: | 100 µL |
| Target: | IFNA1 |
| Binding Specificity: | C-Term |
| Reactivity: | Human, Monkey |
| Host: | Rabbit |
| Clonality: | Polyclonal |
| Conjugate: | This IFNA1 antibody is un-conjugated |
| Application: | Western Blotting (WB) |

Product Details

| | |
|-----------------------|---|
| Immunogen: | Synthetic peptide from C-Terminus of human IFNA13 (P01562, NP_008831). Percent identity by BLAST analysis: Human, Gorilla, Gibbon, Monkey (100%), Elephant, Pig (91%), Goat, Bovine (83%), Panda (80%). Type of Immunogen: Synthetic peptide |
| Specificity: | Human IFNA13 / IFNA1 |
| Predicted Reactivity: | Percent identity by BLAST analysis: Human (100%). |
| Purification: | Immunoaffinity purified |

Target Details

| | |
|---------|-------|
| Target: | IFNA1 |
|---------|-------|

Target Details

| | |
|-------------------|--|
| Alternative Name: | IFNA1 / Interferon Alpha 1 (IFNA1 Products) |
| Background: | Name/Gene ID: IFNA1 Family: Interferon Synonyms: IFNA1, IFN, IFN-alpha 1b, IFNA@, Interferon, alpha 1, LeIF D, Interferon alpha 1b, Interferon alpha-1/13, Interferon alpha-D, Interferon-alpha1, IFL, IFN-ALPHA, IFN-alpha-1/13, IFN-alphaD |
| Gene ID: | 3439 |
| NCBI Accession: | NP_008831 |
| UniProt: | P01562 |
| Pathways: | JAK-STAT Signaling , Hepatitis C |

Application Details

| | |
|--------------------|--|
| Application Notes: | Approved: WB (1 µg/mL) Usage: Western Blot: Suggested dilution at 1 µg/mL in 5 % skim milk / PBS buffer, and HRP conjugated anti-Rabbit IgG should be diluted in 1: 50,000 - 100,000 as secondary antibody. |
| Comment: | Target Species of Antibody: Human |
| Restrictions: | For Research Use only |

Handling

| | |
|------------------|---|
| Format: | Lyophilized |
| Reconstitution: | Distilled water |
| Concentration: | Lot specific |
| Buffer: | Lyophilized from PBS with 2 % sucrose |
| Handling Advice: | Avoid repeat freeze-thaw cycles. |
| Storage: | 4 °C, -20 °C |
| Storage Comment: | Long term: -20°C, the use of 50% glycerol is recommended if storing aliquots in -20°C for long term use (up to 1 year) Short term (less than 1 week): 4°C. Avoid freeze-thaw cycles. |

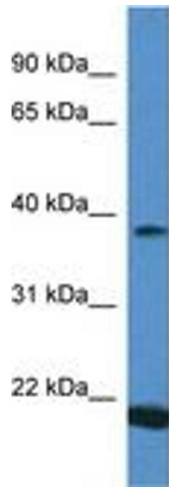


Image 1.