



Datasheet for ABIN6746910
anti-AGPAT3 antibody (AA 145-194)



[Go to Product page](#)

1 Image

Overview

Quantity:	100 µL
Target:	AGPAT3
Binding Specificity:	AA 145-194
Reactivity:	Human, Cow, Dog, Pig, Zebrafish (Danio rerio)
Host:	Rabbit
Clonality:	Polyclonal
Conjugate:	This AGPAT3 antibody is un-conjugated
Application:	Western Blotting (WB)

Product Details

Immunogen:	Synthetic peptide located between aa145-194 of human AGPAT3 (Q9NRZ7, NP_064517). Percent identity by BLAST analysis: Human, Chimpanzee, Gorilla, Orangutan, Gibbon, Pig, Catfish, Salmon, Zebrafish (100%), Monkey, Marmoset, Mouse, Rat, Panda, Horse, Guinea pig, Turkey, Zebra finch, Chicken (92%), Elephant, Stickleback (90%), Galago, Hamster, Dog, Bovine, Bat, Platypus, Lizard, Xenopus (85%). Type of Immunogen: Synthetic peptide
Specificity:	Human AGPAT3
Predicted Reactivity:	Percent identity by BLAST analysis: Human, Pig, Zebrafish (100%) Mouse, Rat, Horse, Guinea pig, Chicken (92%) Dog, Bovine, Xenopus (85%).
Purification:	Immunoaffinity purified

Target Details

Target:	AGPAT3
Alternative Name:	AGPAT3 (AGPAT3 Products)
Background:	Name/Gene ID: AGPAT3 Synonyms: AGPAT3, 1-AGP acyltransferase 3, 1-AGPAT 3, LPAAT3, LPAAT-gamma, LPAAT-GAMMA1
Gene ID:	56894
NCBI Accession:	NP_064517
UniProt:	Q9NRZ7

Application Details

Application Notes:	Approved: WB (1 µg/mL) Usage: Western Blot: Suggested dilution at 1 µg/mL in 5 % skim milk / PBS buffer, and HRP conjugated anti-Rabbit IgG should be diluted in 1: 50,000 - 100,000 as secondary antibody.
Comment:	Target Species of Antibody: Human
Restrictions:	For Research Use only

Handling

Format:	Lyophilized
Reconstitution:	Distilled water
Concentration:	Lot specific
Buffer:	Lyophilized from PBS with 2 % sucrose
Handling Advice:	Avoid repeat freeze-thaw cycles.
Storage:	4 °C, -20 °C
Storage Comment:	Long term: -20°C, the use of 50% glycerol is recommended if storing aliquots in -20°C for long term use (up to 1 year) Short term (less than 1 week): 4°C. Avoid freeze-thaw cycles.

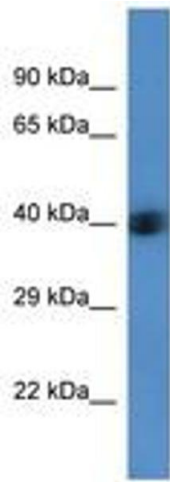


Image 1.