



[Go to Product page](#)

Datasheet for ABIN6746912
anti-AKR1D1 antibody (AA 113-162)

1 Image

Overview

Quantity:	100 µL
Target:	AKR1D1
Binding Specificity:	AA 113-162
Reactivity:	Human, Rat, Cow, Rabbit
Host:	Rabbit
Clonality:	Polyclonal
Conjugate:	This AKR1D1 antibody is un-conjugated
Application:	Western Blotting (WB)

Product Details

Immunogen:	Synthetic peptide located between aa113-162 of human AKR1D1 (P51857, NP_005980). Percent identity by BLAST analysis: Human, Chimpanzee, Gibbon, Rabbit (100%), Gorilla, Monkey, Marmoset, Mouse, Dog, Horse, Xenopus (92%), Galago, Elephant, Bovine, Pig, Chicken, Smelt, Sablefish (85%), Turkey (84%), Rat (76%). Type of Immunogen: Synthetic peptide
Specificity:	Human AKR1D1
Predicted Reactivity:	Percent identity by BLAST analysis: Human (100%) Mouse, Dog, Xenopus (92%) Bovine, Chicken (85%).
Purification:	Immunoaffinity purified

Target Details

Target:	AKR1D1
Alternative Name:	AKR1D1 (AKR1D1 Products)
Background:	Name/Gene ID: AKR1D1 Synonyms: AKR1D1, 3o5bred, SRD5B1, CBAS2
Gene ID:	6718
NCBI Accession:	NP_005980
UniProt:	P51857
Pathways:	Steroid Hormone Biosynthesis , C21-Steroid Hormone Metabolic Process , Monocarboxylic Acid Catabolic Process

Application Details

Application Notes:	Approved: WB (1 µg/mL) Usage: Western Blot: Suggested dilution at 1 µg/mL in 5 % skim milk / PBS buffer, and HRP conjugated anti-Rabbit IgG should be diluted in 1: 50,000 - 100,000 as secondary antibody.
Comment:	Target Species of Antibody: Human
Restrictions:	For Research Use only

Handling

Format:	Lyophilized
Reconstitution:	Distilled water
Concentration:	Lot specific
Buffer:	Lyophilized from PBS with 2 % sucrose
Handling Advice:	Avoid repeat freeze-thaw cycles.
Storage:	4 °C,-20 °C
Storage Comment:	Long term: -20°C, the use of 50% glycerol is recommended if storing aliquots in -20°C for long term use (up to 1 year) Short term (less than 1 week): 4°C. Avoid freeze-thaw cycles.

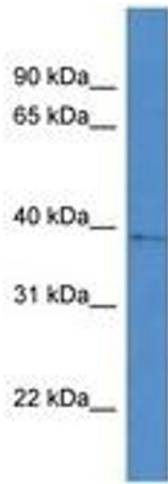


Image 1.