



[Go to Product page](#)

Datasheet for ABIN6746920
anti-CYP7B1 antibody (AA 304-353)

1 Image

Overview

| | |
|----------------------|---------------------------------------|
| Quantity: | 100 µL |
| Target: | CYP7B1 |
| Binding Specificity: | AA 304-353 |
| Reactivity: | Human, Rabbit, Pig, Monkey |
| Host: | Rabbit |
| Clonality: | Polyclonal |
| Conjugate: | This CYP7B1 antibody is un-conjugated |
| Application: | Western Blotting (WB) |

Product Details

| | |
|-----------------------|--|
| Immunogen: | Synthetic peptide located between aa304-353 of human CYP7B1 (O75881, NP_004811). Percent identity by BLAST analysis: Human, Chimpanzee, Gorilla, Gibbon, Monkey, Marmoset (100%), Galago, Dog, Horse (92%), Pig (85%), Bat, Rabbit (84%). Type of Immunogen: Synthetic peptide |
| Specificity: | Human CYP7B1 |
| Predicted Reactivity: | Percent identity by BLAST analysis: Human (100%) Dog (92%) Pig (85%) Rabbit (84%). |
| Purification: | Immunoaffinity purified |

Target Details

| | |
|---------|--------|
| Target: | CYP7B1 |
|---------|--------|

Target Details

| | |
|-------------------|--|
| Alternative Name: | CYP7B1 (CYP7B1 Products) |
| Background: | Name/Gene ID: CYP7B1 Family: Cytochrome P450 Synonyms: CYP7B1, CBAS3, CP7B, Oxysterol 7alpha-hydroxylase, Oxysterol 7-alpha-hydroxylase, SPG5A, Cytochrome P450 7B1 |
| Gene ID: | 9420 |
| NCBI Accession: | NP_004811 |
| UniProt: | O75881 |
| Pathways: | Intracellular Steroid Hormone Receptor Signaling Pathway , Steroid Hormone Biosynthesis , Regulation of Intracellular Steroid Hormone Receptor Signaling |

Application Details

| | |
|--------------------|--|
| Application Notes: | Approved: WB (1 µg/mL) Usage: Western Blot: Suggested dilution at 1 µg/mL in 5 % skim milk / PBS buffer, and HRP conjugated anti-Rabbit IgG should be diluted in 1: 50,000 - 100,000 as secondary antibody. |
| Comment: | Target Species of Antibody: Human |
| Restrictions: | For Research Use only |

Handling

| | |
|------------------|---|
| Format: | Lyophilized |
| Reconstitution: | Distilled water |
| Concentration: | Lot specific |
| Buffer: | Lyophilized from PBS with 2 % sucrose |
| Handling Advice: | Avoid repeat freeze-thaw cycles. |
| Storage: | 4 °C, -20 °C |
| Storage Comment: | Long term: -20°C, the use of 50% glycerol is recommended if storing aliquots in -20°C for long term use (up to 1 year) Short term (less than 1 week): 4°C. Avoid freeze-thaw cycles. |

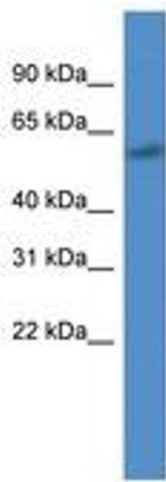


Image 1.