



Datasheet for ABIN6746923  
**anti-DGCR6L antibody (AA 119-168)**



[Go to Product page](#)

1 Image

Overview

Quantity:	100 µL
Target:	DGCR6L
Binding Specificity:	AA 119-168
Reactivity:	Human, Mouse, Rat, Rabbit, Cow, Dog, Guinea Pig, Monkey
Host:	Rabbit
Clonality:	Polyclonal
Conjugate:	This DGCR6L antibody is un-conjugated
Application:	Western Blotting (WB)

Product Details

Immunogen:	Synthetic peptide located between aa119-168 of human DGCR6L (Q9BY27, NP_150282). Percent identity by BLAST analysis: Human, Gorilla, Gibbon, Monkey, Marmoset, Mouse, Rat, Elephant, Dog, Bovine, Rabbit, Guinea pig (100%), Opossum, Zebra finch, Chicken, Xenopus, Frog (85%).  Type of Immunogen: Synthetic peptide
Specificity:	Human DGCR6L
Predicted Reactivity:	Percent identity by BLAST analysis: Human (100%).
Purification:	Immunoaffinity purified

## Target Details

---

Target:	DGCR6L
Alternative Name:	DGCR6L ( <a href="#">DGCR6L Products</a> )
Background:	Name/Gene ID: DGCR6L  Synonyms: DGCR6L, Protein DGCR6L
Gene ID:	85359
NCBI Accession:	<a href="#">NP_150282</a>
UniProt:	<a href="#">Q9BY27</a>

## Application Details

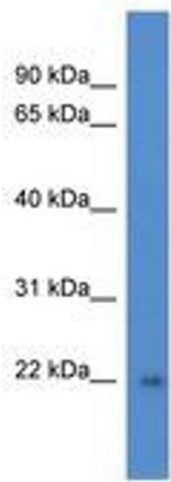
---

Application Notes:	Approved: WB (1 µg/mL)  Usage: Western Blot: Suggested dilution at 1 µg/mL in 5 % skim milk / PBS buffer, and HRP conjugated anti-Rabbit IgG should be diluted in 1: 50,000 - 100,000 as secondary antibody.
Comment:	Target Species of Antibody: Human
Restrictions:	For Research Use only

## Handling

---

Format:	Lyophilized
Reconstitution:	Distilled water
Concentration:	Lot specific
Buffer:	Lyophilized from PBS with 2 % sucrose
Handling Advice:	Avoid repeat freeze-thaw cycles.
Storage:	4 °C, -20 °C
Storage Comment:	Long term: -20°C, the use of 50% glycerol is recommended if storing aliquots in -20°C for long term use (up to 1 year)  Short term (less than 1 week): 4°C. Avoid freeze-thaw cycles.



**Image 1.**