



[Go to Product page](#)

Datasheet for ABIN6746925  
**anti-CAPN1 antibody (AA 185-234)**

1 Image

Overview

Quantity:	100 µL
Target:	CAPN1
Binding Specificity:	AA 185-234
Reactivity:	Human, Cow, Pig, Goat, Rabbit, Sheep, Bat, Chicken, Dog, Guinea Pig, Horse, Monkey, Xenopus laevis, Zebrafish (Danio rerio)
Host:	Rabbit
Clonality:	Polyclonal
Conjugate:	This CAPN1 antibody is un-conjugated
Application:	Western Blotting (WB)

Product Details

Immunogen:	Synthetic peptide located between aa185-234 of human CAPN1 (P07384, NP_005177). Percent identity by BLAST analysis: Human, Chimpanzee, Gorilla, Orangutan, Gibbon, Monkey, Galago, Marmoset, Sheep, Goat, Dog, Bovine, Bat, Rabbit, Horse, Pig, Opossum, Guinea pig, Zebra finch, Chicken, Xenopus, Trout, Seabass, Salmon, Stickleback, Zebrafish (100%), Mouse, Rat, Elephant, Turkey, Platypus, Lizard (92%).  Type of Immunogen: Synthetic peptide
Specificity:	Human CAPN1 / Calpain 1
Predicted Reactivity:	Percent identity by BLAST analysis: Human, Sheep, Dog, Bovine, Goat, Rabbit, Horse, Pig, Guinea pig, Chicken, Xenopus, Zebrafish (100%) Mouse, Rat (85%).

## Product Details

---

Purification: Immunoaffinity purified

## Target Details

---

Target: CAPN1

Alternative Name: CAPN1 / Calpain 1 ([CAPN1 Products](#))

Background: Name/Gene ID: CAPN1  
Subfamily: Cysteine C2  
Family: Protease

Synonyms: CAPN1, Calpain i, Calpain mu-type, Calpain, large polypeptide L1, Calpain-1 catalytic subunit, Calpain 1, Calpain-1 large subunit, CANP, CANP1, Mu CANP, Mu-calpain, Mu-type calpain, MuCANP, Micromolar-calpain, MuCL, CANP 1, CANPL1

Gene ID: 823

NCBI Accession: [NP\\_005177](#)

UniProt: [P07384](#)

## Application Details

---

Application Notes: Approved: WB (1 µg/mL)

Usage: Western Blot: Suggested dilution at 1 µg/mL in 5 % skim milk / PBS buffer, and HRP conjugated anti-Rabbit IgG should be diluted in 1: 50,000 - 100,000 as secondary antibody.

Comment: Target Species of Antibody: Human

Restrictions: For Research Use only

## Handling

---

Format: Lyophilized

Reconstitution: Distilled water

Concentration: Lot specific

Buffer: Lyophilized from PBS with 2 % sucrose

Handling Advice: Avoid repeat freeze-thaw cycles.

## Handling

---

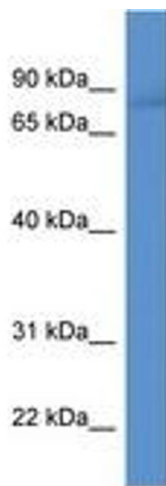
Storage: 4 °C, -20 °C

---

Storage Comment: Long term: -20°C, the use of 50% glycerol is recommended if storing aliquots in -20°C for long term use (up to 1 year)  
Short term (less than 1 week): 4°C. Avoid freeze-thaw cycles.

## Images

---



**Image 1.**