

Datasheet for ABIN6746937  
**anti-HCCS antibody (AA 194-243)**[Go to Product page](#)

## 1 Image

## Overview

Quantity:	100 µL
Target:	HCCS
Binding Specificity:	AA 194-243
Reactivity:	Human, Rat, Monkey, Rabbit, Pig, Hamster
Host:	Rabbit
Clonality:	Polyclonal
Conjugate:	This HCCS antibody is un-conjugated
Application:	Western Blotting (WB)

## Product Details

Immunogen:	Synthetic peptide located between aa194-243 of human HCCS (P53701, NP_005324). Percent identity by BLAST analysis: Human, Chimpanzee, Gorilla, Gibbon, Monkey, Marmoset, Rat, Hamster, Rabbit, Opossum (100%), Galago, Mouse, Elephant, Panda, Dog, Bovine (92%), Bat, Horse, Pig, Platypus, Lizard, Xenopus, Frog (85%).  Type of Immunogen: Synthetic peptide
Specificity:	Human HCCS
Predicted Reactivity:	Percent identity by BLAST analysis: Human, Rat (100%) Mouse, Dog (92%) Pig (85%).
Purification:	Immunoaffinity purified

## Target Details

Target:	HCCS
Alternative Name:	HCCS ( <a href="#">HCCS Products</a> )
Background:	Name/Gene ID: HCCS  Synonyms: HCCS, CCHL, Cytochrome c-type heme lyase, Cytochrome c heme-lyase, Holocytochrome c synthase, Holocytochrome c-type synthase, MCOPS7
Gene ID:	3052
NCBI Accession:	<a href="#">NP_005324</a>
UniProt:	<a href="#">P53701</a>

## Application Details

Application Notes:	Approved: WB (1 µg/mL)  Usage: Western Blot: Suggested dilution at 1 µg/mL in 5 % skim milk / PBS buffer, and HRP conjugated anti-Rabbit IgG should be diluted in 1: 50,000 - 100,000 as secondary antibody.
Comment:	Target Species of Antibody: Human
Restrictions:	For Research Use only

## Handling

Format:	Lyophilized
Reconstitution:	Distilled water
Concentration:	Lot specific
Buffer:	Lyophilized from PBS with 2 % sucrose
Handling Advice:	Avoid repeat freeze-thaw cycles.
Storage:	4 °C, -20 °C
Storage Comment:	Long term: -20°C, the use of 50% glycerol is recommended if storing aliquots in -20°C for long term use (up to 1 year)  Short term (less than 1 week): 4°C. Avoid freeze-thaw cycles.

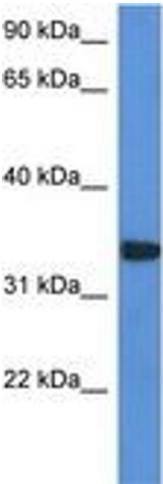


Image 1.