



[Go to Product page](#)

Datasheet for ABIN6746943
anti-GABBR2 antibody (AA 761-810)

1 Image

Overview

Quantity:	100 µL
Target:	GABBR2
Binding Specificity:	AA 761-810
Reactivity:	Human, Rat, Mouse, Cow, Dog, Chicken, Horse, Pig, Rabbit, Zebrafish (Danio rerio), Bat, Monkey
Host:	Rabbit
Clonality:	Polyclonal
Conjugate:	This GABBR2 antibody is un-conjugated
Application:	Western Blotting (WB)

Product Details

Immunogen:	Synthetic peptide located between aa761-810 of human GABBR2 (O75899, NP_005449). Percent identity by BLAST analysis: Human, Chimpanzee, Gorilla, Gibbon, Monkey, Galago, Mouse, Rat, Elephant, Dog, Bovine, Bat, Rabbit, Horse, Pig, Opossum, Zebra finch, Chicken, Platypus, Zebrafish (100%), Guinea pig, Xenopus (92%). Type of Immunogen: Synthetic peptide
Specificity:	Human GABBR2
Predicted Reactivity:	Percent identity by BLAST analysis: Dog, Bovine, Rabbit, Horse, Pig, Chicken, Zebrafish (100%) Guinea pig, Xenopus (92%).
Purification:	Immunoaffinity purified

Target Details

Target:	GABBR2
Alternative Name:	GABA B Receptor 2 / GABBR2 (GABBR2 Products)
Background:	Name/Gene ID: GABBR2 Subfamily: GABA(B) Family: GPCR Synonyms: GABBR2, G protein-coupled receptor 51, GABA(B2), GABA-B receptor 2, Gaba-b receptor r2, GABA-BR2, Gabab-receptor subunit 2, GABA(B)R2, GABA-B receptor, R2 subunit, GABA-B-R2, GABAB receptor-2, GPRC3B, Gb2, HRIHFB2099, G-protein coupled receptor 51, GPR51, HG20, GABA B Receptor 2, GABA-B2, GABAB2, GABABR2, Gbr2
Gene ID:	9568
NCBI Accession:	NP_005449
UniProt:	O75899
Pathways:	cAMP Metabolic Process

Application Details

Application Notes:	Approved: WB (1 µg/mL) Usage: Western Blot: Suggested dilution at 1 µg/mL in 5 % skim milk / PBS buffer, and HRP conjugated anti-Rabbit IgG should be diluted in 1: 50,000 - 100,000 as secondary antibody.
Comment:	Target Species of Antibody: Human
Restrictions:	For Research Use only

Handling

Format:	Lyophilized
Reconstitution:	Distilled water
Concentration:	Lot specific
Buffer:	Lyophilized from PBS with 2 % sucrose
Handling Advice:	Avoid repeat freeze-thaw cycles.
Storage:	4 °C, -20 °C

Handling

Storage Comment: Long term: -20°C, the use of 50% glycerol is recommended if storing aliquots in -20°C for long term use (up to 1 year)
Short term (less than 1 week): 4°C. Avoid freeze-thaw cycles.

Images

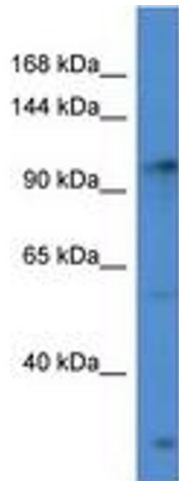


Image 1.