

Datasheet for ABIN6746949
anti-PTER antibody (AA 63-112)[Go to Product page](#)

1 Image

Overview

Quantity:	100 µL
Target:	PTER
Binding Specificity:	AA 63-112
Reactivity:	Human, Rat, Rabbit, Monkey
Host:	Rabbit
Clonality:	Polyclonal
Conjugate:	This PTER antibody is un-conjugated
Application:	Western Blotting (WB)

Product Details

Immunogen:	Synthetic peptide located between aa63-112 of human PTER (Q96BW5, NP_109589). Percent identity by BLAST analysis: Human, Chimpanzee, Gorilla, Orangutan, Gibbon, Monkey, Marmoset (100%), Mouse, Hamster, Elephant, Dog, Bovine, Horse (92%), Galago, Rat, Panda, Bat, Opossum, Platypus (85%), Rabbit (84%). Type of Immunogen: Synthetic peptide
Specificity:	Human PTER
Predicted Reactivity:	Percent identity by BLAST analysis: Human (100%) Mouse, Dog, Bovine (92%) Rat (85%) Rabbit (84%).
Purification:	Immunoaffinity purified

Target Details

Target:	PTER
Alternative Name:	PTER (PTER Products)
Background:	Name/Gene ID: PTER Synonyms: PTER, HPHRP, Phosphotriesterase related, RPR-1
Gene ID:	9317
NCBI Accession:	NP_109589
UniProt:	Q96BW5

Application Details

Application Notes:	Approved: WB (1 µg/mL) Usage: Western Blot: Suggested dilution at 1 µg/mL in 5 % skim milk / PBS buffer, and HRP conjugated anti-Rabbit IgG should be diluted in 1: 50,000 - 100,000 as secondary antibody.
Comment:	Target Species of Antibody: Human
Restrictions:	For Research Use only

Handling

Format:	Lyophilized
Reconstitution:	Distilled water
Concentration:	Lot specific
Buffer:	Lyophilized from PBS with 2 % sucrose
Handling Advice:	Avoid repeat freeze-thaw cycles.
Storage:	4 °C, -20 °C
Storage Comment:	Long term: -20°C, the use of 50% glycerol is recommended if storing aliquots in -20°C for long term use (up to 1 year) Short term (less than 1 week): 4°C. Avoid freeze-thaw cycles.

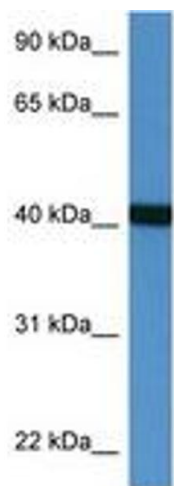


Image 1.