



[Go to Product page](#)

Datasheet for ABIN6746952
anti-PFKM antibody (C-Term)

1 Image

Overview

Quantity:	100 µL
Target:	PFKM
Binding Specificity:	C-Term
Reactivity:	Human, Mouse, Rat, Zebrafish (Danio rerio), Bat, Hamster
Host:	Rabbit
Clonality:	Polyclonal
Application:	Western Blotting (WB)

Product Details

Immunogen:	Synthetic peptide from C-Terminus of human PFKM (P08237, NP_000280). Percent identity by BLAST analysis: Human, Chimpanzee, Gorilla, Orangutan, Gibbon, Galago, Marmoset, Mouse, Rat, Hamster, Bat (100%), Monkey, Dog, Bovine, Horse, Pig, Guinea pig (92%), Elephant, Rabbit, Opossum, Chicken, Lizard, Xenopus, Salmon, Zebrafish (85%), Stickleback (84%). Type of Immunogen: Synthetic peptide
Specificity:	Human PFKM / PFK-1
Predicted Reactivity:	Percent identity by BLAST analysis: Human, Mouse, Rat (100%) Horse (92%) Chicken, Zebrafish (85%).
Purification:	Immunoaffinity purified

Target Details

Target:	PFKM
Alternative Name:	PFKM / PFK-1 (PFKM Products)
Background:	Name/Gene ID: PFKM Synonyms: PFKM, 6-phosphofructo-1-kinase, GSD7, PFK1, PFKA, PFKX, Phosphofructokinase-M, Phosphofructokinase 1, PFK-1, PFK-A, Phosphofructokinase, muscle, Phosphohexokinase
Gene ID:	5213
NCBI Accession:	NP_000280
UniProt:	P08237
Pathways:	Positive Regulation of Peptide Hormone Secretion , Negative Regulation of Hormone Secretion , Carbohydrate Homeostasis , Warburg Effect

Application Details

Application Notes:	Approved: WB (1 µg/mL) Usage: Western Blot: Suggested dilution at 1 µg/mL in 5 % skim milk / PBS buffer, and HRP conjugated anti-Rabbit IgG should be diluted in 1: 50,000 - 100,000 as secondary antibody.
Comment:	Target Species of Antibody: Human
Restrictions:	For Research Use only

Handling

Format:	Lyophilized
Reconstitution:	Distilled water
Concentration:	Lot specific
Buffer:	Lyophilized from PBS with 2 % sucrose
Handling Advice:	Avoid repeat freeze-thaw cycles.
Storage:	4 °C, -20 °C
Storage Comment:	Long term: -20°C, the use of 50% glycerol is recommended if storing aliquots in -20°C for long term use (up to 1 year) Short term (less than 1 week): 4°C. Avoid freeze-thaw cycles.

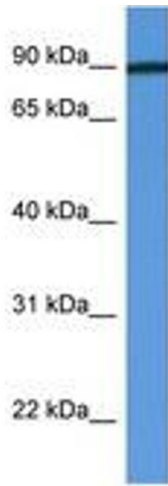


Image 1.