



[Go to Product page](#)

Datasheet for ABIN6746962  
**anti-DHPS antibody (AA 51-100)**

1 Image

Overview

Quantity:	100 µL
Target:	DHPS
Binding Specificity:	AA 51-100
Reactivity:	Human, Mouse, Monkey, Pig, Dog, Guinea Pig, Horse
Host:	Rabbit
Clonality:	Polyclonal
Conjugate:	This DHPS antibody is un-conjugated
Application:	Western Blotting (WB)

Product Details

Immunogen:	Synthetic peptide located between aa51-100 of human DHPS (P49366, NP_037538). Percent identity by BLAST analysis: Human, Chimpanzee, Gorilla, Monkey, Galago, Marmoset, Dog, Horse, Pig (100%), Gibbon, Elephant, Panda, Bovine, Rabbit (92%), Bat, Guinea pig (85%), Mouse (78%).  Type of Immunogen: Synthetic peptide
Specificity:	Human DHPS
Predicted Reactivity:	Percent identity by BLAST analysis: Human, Dog, Horse (100%) Guinea pig (85%).
Purification:	Immunoaffinity purified

## Target Details

---

Target:	DHPS
Alternative Name:	DHPS ( <a href="#">DHPS Products</a> )
Background:	Name/Gene ID: DHPS  Synonyms: DHPS, Deoxyhypusine synthase, DS, DHS, MIG13, Migration-inducing gene 13
Gene ID:	1725
NCBI Accession:	<a href="#">NP_037538</a>
UniProt:	<a href="#">P49366</a>

## Application Details

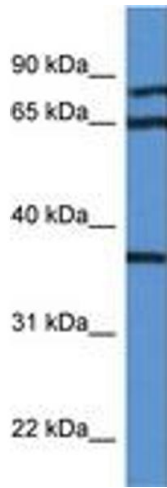
---

Application Notes:	Approved: WB (1 µg/mL)  Usage: Western Blot: Suggested dilution at 1 µg/mL in 5 % skim milk / PBS buffer, and HRP conjugated anti-Rabbit IgG should be diluted in 1: 50,000 - 100,000 as secondary antibody.
Comment:	Target Species of Antibody: Human
Restrictions:	For Research Use only

## Handling

---

Format:	Lyophilized
Reconstitution:	Distilled water
Concentration:	Lot specific
Buffer:	Lyophilized from PBS with 2 % sucrose
Handling Advice:	Avoid repeat freeze-thaw cycles.
Storage:	4 °C, -20 °C
Storage Comment:	Long term: -20°C, the use of 50% glycerol is recommended if storing aliquots in -20°C for long term use (up to 1 year)  Short term (less than 1 week): 4°C. Avoid freeze-thaw cycles.



**Image 1.**