

Datasheet for ABIN6746971  
**anti-HARS1/Jo-1 antibody (AA 54-103)**



[Go to Product page](#)

1 Image

Overview

Quantity:	100 µL
Target:	HARS1/Jo-1 (HARS1)
Binding Specificity:	AA 54-103
Reactivity:	Human, Mouse, Rat, Monkey, Cow, Dog, Guinea Pig, Horse, Rabbit, Zebrafish (Danio rerio), Hamster, Pig
Host:	Rabbit
Clonality:	Polyclonal
Conjugate:	This HARS1/Jo-1 antibody is un-conjugated
Application:	Western Blotting (WB)

Product Details

Immunogen: Synthetic peptide located between aa54-103 of human HARS (P12081, NP\_002100). Percent identity by BLAST analysis: Human, Chimpanzee, Gorilla, Orangutan, Gibbon, Monkey, Galago, Marmoset, Mouse, Rat, Hamster, Elephant, Panda, Dog, Bovine, Rabbit, Horse, Pig, Guinea pig, Platypus (100%), Opossum (92%), Beetle (91%), Bat, Chicken, Xenopus, Drosophila, Slime mold (85%).

Type of Immunogen: Synthetic peptide

Specificity:	Human HARS
Predicted Reactivity:	Percent identity by BLAST analysis: Human, Mouse, Rat, Dog, Rabbit (100%) Chicken (85%).
Purification:	Immunoaffinity purified

## Target Details

---

Target: HARS1/Jo-1 (HARS1)

Alternative Name: HARS ([HARS1 Products](#))

Background: Name/Gene ID: HARS

Synonyms: HARS, Histidine transase, Histidyl-tRNA synthetase, HRS, USH3B, HisRS

Gene ID: 3035

NCBI Accession: [NP\\_002100](#)

UniProt: [P12081](#)

## Application Details

---

Application Notes: Approved: WB (1 µg/mL)

Usage: Western Blot: Suggested dilution at 1 µg/mL in 5 % skim milk / PBS buffer, and HRP conjugated anti-Rabbit IgG should be diluted in 1: 50,000 - 100,000 as secondary antibody.

Comment: Target Species of Antibody: Human

Restrictions: For Research Use only

## Handling

---

Format: Lyophilized

Reconstitution: Distilled water

Concentration: Lot specific

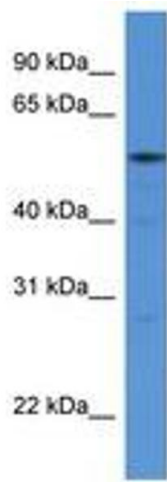
Buffer: Lyophilized from PBS with 2 % sucrose

Handling Advice: Avoid repeat freeze-thaw cycles.

Storage: 4 °C, -20 °C

Storage Comment: Long term: -20°C, the use of 50% glycerol is recommended if storing aliquots in -20°C for long term use (up to 1 year)

Short term (less than 1 week): 4°C. Avoid freeze-thaw cycles.



**Image 1.**