



[Go to Product page](#)

Datasheet for ABIN6746981
anti-PDK2 antibody (AA 251-300)

2 Images

Overview

Quantity:	100 µL
Target:	PDK2
Binding Specificity:	AA 251-300
Reactivity:	Human, Cow
Host:	Rabbit
Clonality:	Polyclonal
Conjugate:	This PDK2 antibody is un-conjugated
Application:	Western Blotting (WB), Immunohistochemistry (IHC), Immunohistochemistry (Paraffin-embedded Sections) (IHC (p))

Product Details

Brand:	IHC-plus™
Immunogen:	Synthetic peptide located between aa251-300 of human PDK2 (Q15119, NP_002602). Percent identity by BLAST analysis: Human, Chimpanzee, Gorilla, Orangutan, Gibbon (100%), Galago, Marmoset, Mouse, Rat, Hamster, Elephant, Panda, Dog, Rabbit, Horse, Opossum, Guinea pig (92%), Bat (84%). Type of Immunogen: Synthetic peptide
Isotype:	IgG
Specificity:	Human PDK2
Predicted Reactivity:	Percent identity by BLAST analysis: Human (100%) Mouse, Rat, Dog, Rabbit, Horse, Guinea pig

Product Details

(92%).

Purification: Immunoaffinity purified

Target Details

Target: PDK2

Alternative Name: PDK2 ([PDK2 Products](#))

Background: Name/Gene ID: PDK2
Subfamily: PDK/BCKDK
Family: Protein Kinase

Synonyms: PDK2, PDHK2, PDHKII

Gene ID: 5164

NCBI Accession: [NP_002602](#)

UniProt: [Q15119](#)

Pathways: [PI3K-Akt Signaling](#), [RTK Signaling](#), [Carbohydrate Homeostasis](#), [Regulation of Carbohydrate Metabolic Process](#), [Warburg Effect](#)

Application Details

Application Notes: Approved: IHC, IHC-P (5 µg/mL), WB (0.2 - 1 µg/mL)

Usage: Western Blot: Suggested dilution at 1 µg/mL in 5 % skim milk / PBS buffer, and HRP conjugated anti-Rabbit IgG should be diluted in 1: 50,000 - 100,000 as second antibody. ELISA titer in peptide based assay: 1:12500.

Comment: Target Species of Antibody: Human

Restrictions: For Research Use only

Handling

Format: Lyophilized

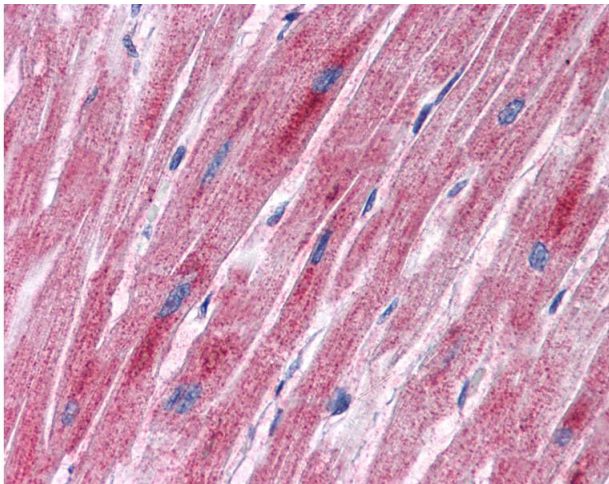
Reconstitution: Distilled water

Concentration: Lot specific

Handling

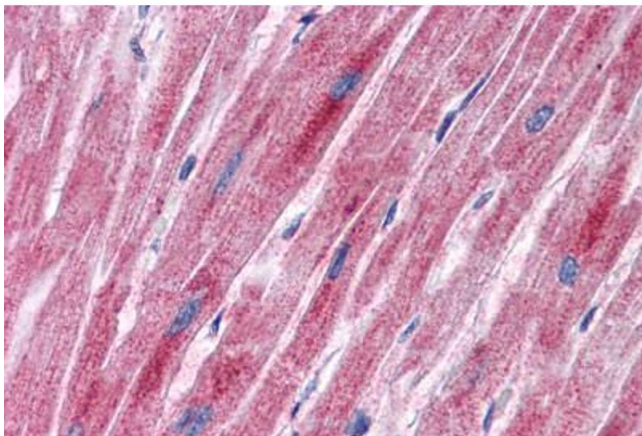
Buffer:	Lyophilized from PBS with 2 % sucrose
Handling Advice:	Avoid repeat freeze-thaw cycles.
Storage:	4 °C, -20 °C
Storage Comment:	Long term: -20°C, the use of 50% glycerol is recommended if storing aliquots in -20°C for long term use (up to 1 year) Short term (less than 1 week): 4°C. Avoid freeze-thaw cycles.

Images



Immunohistochemistry

Image 1. Anti-PDK2 antibody IHC of human heart. Immunohistochemistry of formalin-fixed, paraffin-embedded tissue after heat-induced antigen retrieval. Antibody concentration 5 ug/ml. This image was taken for the unconjugated form of this product. Other forms ...



Immunohistochemistry (Formalin-fixed Paraffin-embedded Sections)

Image 2. Human Heart: Formalin-Fixed, Paraffin-Embedded (FFPE)