



[Go to Product page](#)

Datasheet for ABIN6746985
anti-ATF6 antibody (C-Term)

2 Images

Overview

Quantity:	100 µL
Target:	ATF6
Binding Specificity:	C-Term
Reactivity:	Human, Mouse, Rat, Rabbit, Cow, Horse, Guinea Pig, Pig, Monkey
Host:	Rabbit
Clonality:	Polyclonal
Conjugate:	This ATF6 antibody is un-conjugated
Application:	Western Blotting (WB), Immunohistochemistry (IHC), Immunohistochemistry (Paraffin-embedded Sections) (IHC (p))

Product Details

Brand:	IHC-plus™
Immunogen:	Synthetic peptide from C-Terminus of mouse Atf6 (B2RU98, NP_001074773). Percent identity by BLAST analysis: Human, Gorilla, Gibbon, Monkey, Galago, Mouse, Elephant, Bovine, Rabbit, Horse, Pig, Guinea pig (100%), Hamster (92%), Rat (84%). Type of Immunogen: Synthetic peptide
Specificity:	Mouse ATF6
Predicted Reactivity:	Percent identity by BLAST analysis: Human, Bovine, Rabbit, Horse, Pig, Guinea pig (100%) Mouse, Rat (84%).
Purification:	Immunoaffinity purified

Target Details

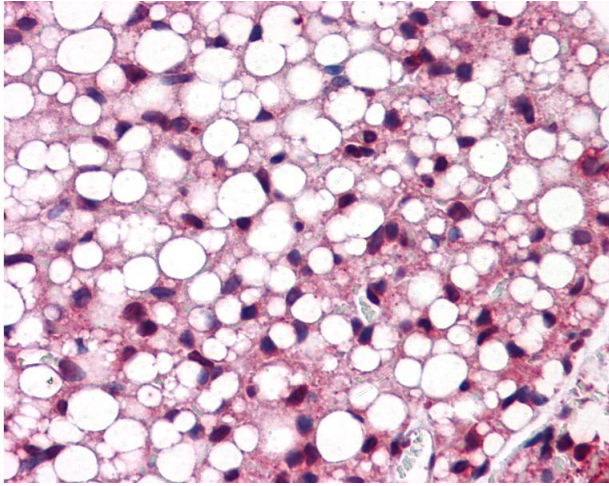
Target:	ATF6
Alternative Name:	ATF6 (ATF6 Products)
Background:	Name/Gene ID: ATF6 Synonyms: ATF6, ATF6-alpha, ATF6A
Gene ID:	22926
NCBI Accession:	NP_001074773
UniProt:	P18850
Pathways:	ER-Nucleus Signaling , Unfolded Protein Response

Application Details

Application Notes:	Approved: IHC, IHC-P (5 µg/mL), WB (0.2 - 1 µg/mL) Usage: Western Blot: Suggested dilution at 1 µg/mL in 5 % skim milk / PBS buffer, and HRP conjugated anti-Rabbit IgG should be diluted in 1: 50,000 - 100,000 as secondary antibody.
Comment:	Target Species of Antibody: Mouse
Restrictions:	For Research Use only

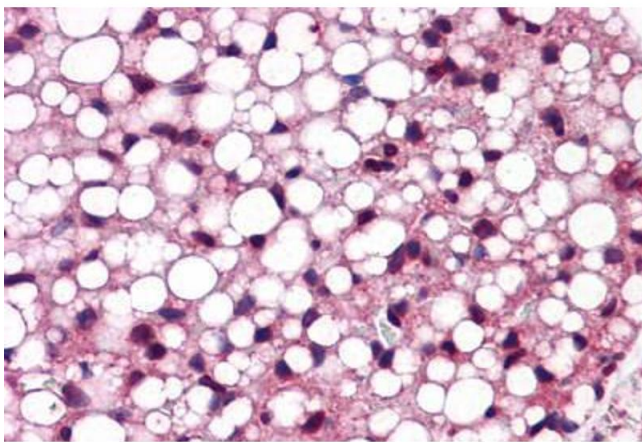
Handling

Format:	Lyophilized
Reconstitution:	Distilled water
Concentration:	Lot specific
Buffer:	Lyophilized from PBS with 2 % sucrose
Handling Advice:	Avoid repeat freeze-thaw cycles.
Storage:	4 °C,-20 °C
Storage Comment:	Long term: -20°C, the use of 50% glycerol is recommended if storing aliquots in -20°C for long term use (up to 1 year) Short term (less than 1 week): 4°C. Avoid freeze-thaw cycles.



Immunohistochemistry

Image 1. Anti-ATF6 antibody IHC of mouse adipose. Immunohistochemistry of formalin-fixed, paraffin-embedded tissue after heat-induced antigen retrieval. Antibody concentration 5 ug/ml. This image was taken for the unconjugated form of this product. Other for ...



Immunohistochemistry (Formalin-fixed Paraffin-embedded Sections)

Image 2. Mouse Adipose: Formalin-Fixed, Paraffin-Embedded (FFPE)