

Datasheet for ABIN6746986  
**anti-SIRT6 antibody (C-Term)**[Go to Product page](#)

## 2 Images

## Overview

Quantity:	100 µL
Target:	SIRT6
Binding Specificity:	C-Term
Reactivity:	Human, Rat, Dog, Cow
Host:	Rabbit
Clonality:	Polyclonal
Conjugate:	This SIRT6 antibody is un-conjugated
Application:	Western Blotting (WB), Immunohistochemistry (IHC), Immunohistochemistry (Paraffin-embedded Sections) (IHC (p))

## Product Details

Brand:	IHC-plus™
Immunogen:	Synthetic peptide from C-Terminus of human SIRT6 (Q8N6T7, NP_057623). Percent identity by BLAST analysis: Human, Dog, Bovine (100%), Gorilla, Marmoset (92%), Monkey (85%), Hamster (84%), Rat (83%).  Type of Immunogen: Synthetic peptide
Specificity:	Human SIRT6
Predicted Reactivity:	Percent identity by BLAST analysis: Human, Dog, Bovine (100%) Rat (83%).
Purification:	Immunoaffinity purified

## Target Details

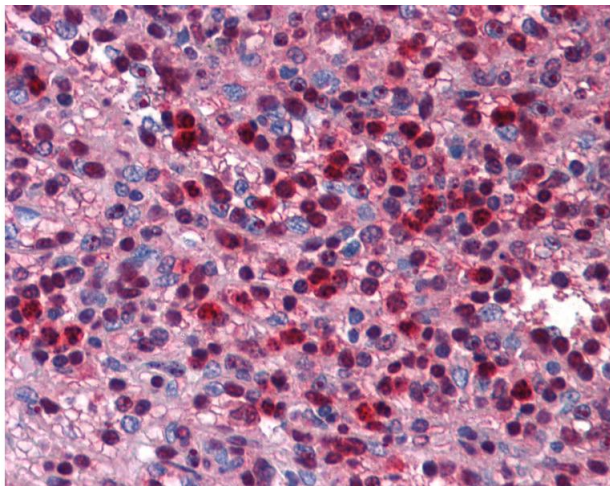
Target:	SIRT6
Alternative Name:	SIRT6 / Sirtuin 6 ( <a href="#">SIRT6 Products</a> )
Background:	Name/Gene ID: SIRT6  Synonyms: SIRT6, SIR2-like protein 6, Sirtuin type 6, SIR2L6, Sir2-related protein type 6, Sirtuin 6
Gene ID:	51548
NCBI Accession:	<a href="#">NP_057623</a>
UniProt:	<a href="#">Q8N6T7</a>

## Application Details

Application Notes:	Approved: IHC, IHC-P (5 µg/mL), WB (0.2 - 1 µg/mL)  Usage: Western Blot: Suggested dilution at 1 µg/mL in 5 % skim milk / PBS buffer, and HRP conjugated anti-Rabbit IgG should be diluted in 1: 50,000 - 100,000 as secondary antibody.
Comment:	Target Species of Antibody: Human
Restrictions:	For Research Use only

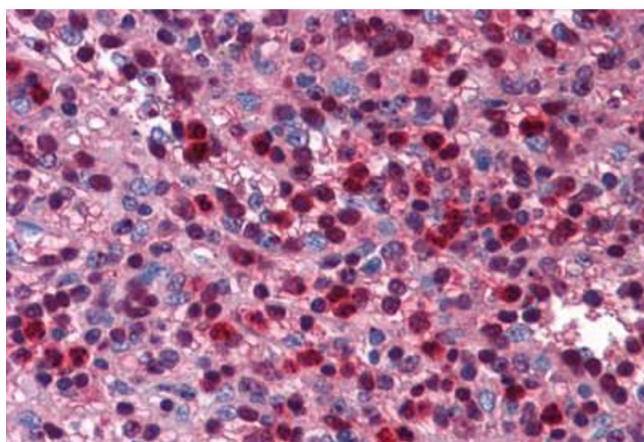
## Handling

Format:	Lyophilized
Reconstitution:	Distilled water
Concentration:	Lot specific
Buffer:	Lyophilized from PBS with 2 % sucrose
Handling Advice:	Avoid repeat freeze-thaw cycles.
Storage:	4 °C, -20 °C
Storage Comment:	Long term: -20°C, the use of 50% glycerol is recommended if storing aliquots in -20°C for long term use (up to 1 year)  Short term (less than 1 week): 4°C. Avoid freeze-thaw cycles.



#### Immunohistochemistry

**Image 1.** Anti-SIRT6 antibody IHC of human spleen. Immunohistochemistry of formalin-fixed, paraffin-embedded tissue after heat-induced antigen retrieval. Antibody concentration 5 ug/ml. This image was taken for the unconjugated form of this product. Other for ...



#### Immunohistochemistry (Formalin-fixed Paraffin-embedded Sections)

**Image 2.** Human Spleen: Formalin-Fixed, Paraffin-Embedded (FFPE)