

Datasheet for ABIN6746987
anti-SIRT4 antibody (AA 216-265)

2 Images

[Go to Product page](#)

Overview

Quantity:	100 µL
Target:	SIRT4
Binding Specificity:	AA 216-265
Reactivity:	Human, Dog, Pig, Monkey
Host:	Rabbit
Clonality:	Polyclonal
Conjugate:	This SIRT4 antibody is un-conjugated
Application:	Western Blotting (WB), Immunohistochemistry (IHC), Immunohistochemistry (Paraffin-embedded Sections) (IHC (p))

Product Details

Brand:	IHC-plus™
Immunogen:	Synthetic peptide located between aa216-265 of human SIRT4 (Q9Y6E7, NP_036372). Percent identity by BLAST analysis: Human, Gorilla, Gibbon, Galago, Marmoset (100%), Mouse, Rat, Sheep, Elephant, Bovine, Rabbit (92%), Pig (85%). Type of Immunogen: Synthetic peptide
Specificity:	Human SIRT4
Predicted Reactivity:	Percent identity by BLAST analysis: Human (100%) Mouse, Rat, Sheep, Bovine (92%) Pig (85%).
Purification:	Immunoaffinity purified

Target Details

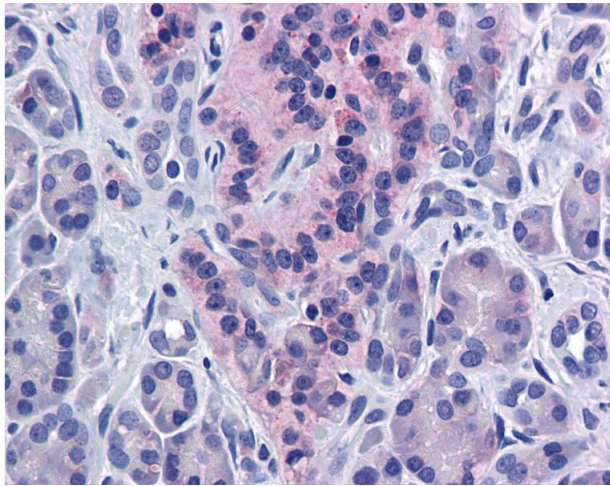
Target:	SIRT4
Alternative Name:	SIRT4 / Sirtuin 4 (SIRT4 Products)
Background:	Name/Gene ID: SIRT4 Family: ADP-Ribosyltransferase Synonyms: SIRT4, Sir2-like 4, SIR2-like protein 4, Sirtuin 4, Sirtuin type 4, SIR2L4
Gene ID:	23409
NCBI Accession:	NP_036372
UniProt:	Q9Y6E7
Pathways:	Negative Regulation of Hormone Secretion

Application Details

Application Notes:	Approved: IHC, IHC-P (5 µg/mL), WB (0.2 - 1 µg/mL) Usage: Western Blot: Suggested dilution at 1 µg/mL in 5 % skim milk / PBS buffer, and HRP conjugated anti-Rabbit IgG should be diluted in 1: 50,000 - 100,000 as secondary antibody.
Comment:	Target Species of Antibody: Human
Restrictions:	For Research Use only

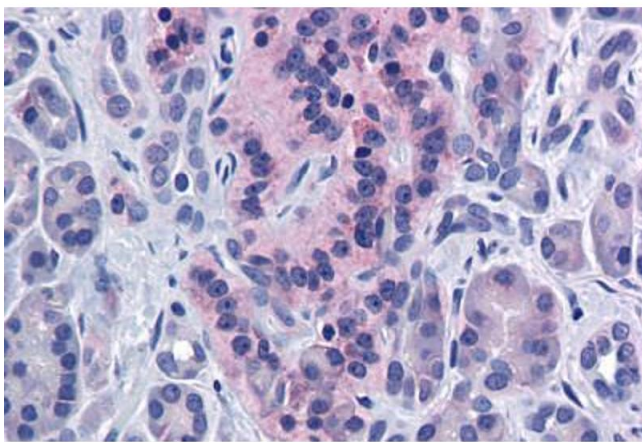
Handling

Format:	Lyophilized
Reconstitution:	Distilled water
Concentration:	Lot specific
Buffer:	Lyophilized from PBS with 2 % sucrose
Handling Advice:	Avoid repeat freeze-thaw cycles.
Storage:	4 °C,-20 °C
Storage Comment:	Long term: -20°C, the use of 50% glycerol is recommended if storing aliquots in -20°C for long term use (up to 1 year) Short term (less than 1 week): 4°C. Avoid freeze-thaw cycles.



Immunohistochemistry

Image 1. Anti-SIRT4 antibody IHC of human pancreas. Immunohistochemistry of formalin-fixed, paraffin-embedded tissue after heat-induced antigen retrieval. Antibody concentration 5 ug/ml. This image was taken for the unconjugated form of this product. Other f ...



Immunohistochemistry (Formalin-fixed Paraffin-embedded Sections)

Image 2. Human Pancreas: Formalin-Fixed, Paraffin-Embedded (FFPE)