



[Go to Product page](#)

Datasheet for ABIN6746988  
**anti-SUZ12 antibody (AA 362-411)**

2 Images

Overview

Quantity:	100 µL
Target:	SUZ12
Binding Specificity:	AA 362-411
Reactivity:	Human, Mouse, Cow, Rabbit, Dog, Horse, Bat
Host:	Rabbit
Clonality:	Polyclonal
Conjugate:	This SUZ12 antibody is un-conjugated
Application:	Western Blotting (WB), Immunohistochemistry (IHC), Immunohistochemistry (Paraffin-embedded Sections) (IHC (p))

Product Details

Brand:	IHC-plus™
Immunogen:	Synthetic peptide located between aa362-411 of human SUZ12 (Q15022, NP_056170). Percent identity by BLAST analysis: Human, Chimpanzee, Gorilla, Gibbon, Monkey, Galago, Mouse, Elephant, Dog, Bovine, Bat, Rabbit, Horse (100%), Marmoset, Opossum, Guinea pig, Turkey, Zebra finch, Chicken, Platypus (92%), Xenopus (85%).  Type of Immunogen: Synthetic peptide
Isotype:	IgG
Specificity:	Human SUZ12
Predicted Reactivity:	Percent identity by BLAST analysis: Human, Mouse, Dog, Bovine, Rabbit, Horse (100%) Chicken

## Product Details

---

(92%) Xenopus (85%).

Purification: Immunoaffinity purified

## Target Details

---

Target: SUZ12

Alternative Name: SUZ12 ([SUZ12 Products](#))

Background: Name/Gene ID: SUZ12

Synonyms: SUZ12, ChET 9 protein, Joined to JAZF1 protein, CHET9, JJAZ1, KIAA0160, Polycomb protein SUZ12

Gene ID: 23512

NCBI Accession: [NP\\_056170](#)

UniProt: [Q15022](#)

## Application Details

---

Application Notes: Approved: IHC, IHC-P (5 µg/mL), WB

Usage: ELISA titer using peptide based assay: 1:312500. Western Blot: Suggested dilution at 1 µg/mL in 5 % skim milk / PBS buffer, and HRP conjugated anti-Rabbit IgG should be diluted in 1:50000 - 100000 as second antibody.

Comment: Target Species of Antibody: Human

Restrictions: For Research Use only

## Handling

---

Format: Lyophilized

Reconstitution: Distilled Water.

Concentration: Lot specific

Buffer: Lyophilized from PBS with 2 % sucrose

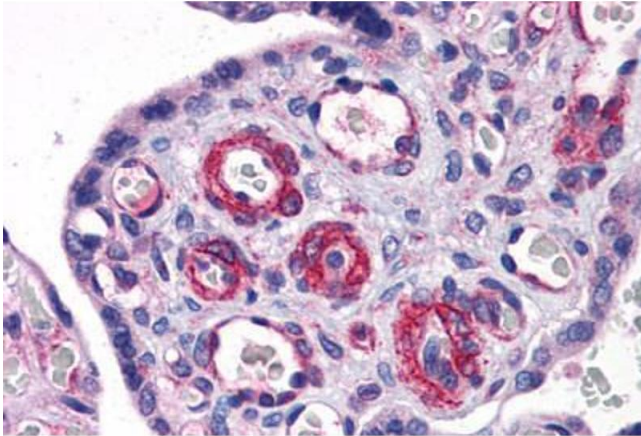
Handling Advice: Avoid repeat freeze-thaw cycles.

Storage: 4 °C, -20 °C

## Handling

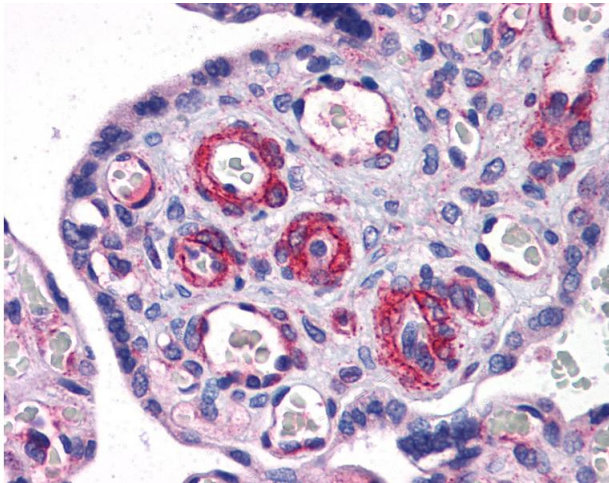
Storage Comment: Long term: -20°C, the use of 50% glycerol is recommended if storing aliquots in -20°C for long term use (up to 1 year)  
Short term (less than 1 week): 4°C. Avoid freeze-thaw cycles.

## Images



### Immunohistochemistry (Formalin-fixed Paraffin-embedded Sections)

**Image 1.** Human Placenta: Formalin-Fixed, Paraffin-Embedded (FFPE)



### Immunohistochemistry

**Image 2.** Anti-SUZ12 antibody IHC of human placenta. Immunohistochemistry of formalin-fixed, paraffin-embedded tissue after heat-induced antigen retrieval. Antibody concentration 5 ug/ml. This image was taken for the unconjugated form of this product. Other f ...